

\$2,399,000 - 20100 County Rd 42, Tilbury North

MLS® #25007511

\$2,399,000

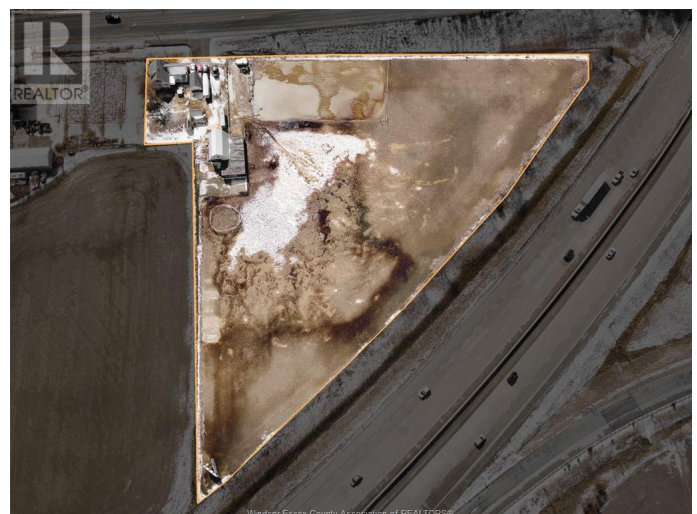
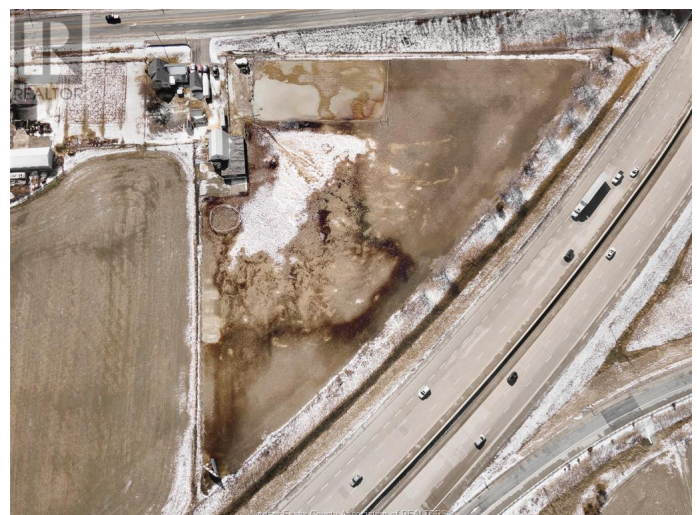
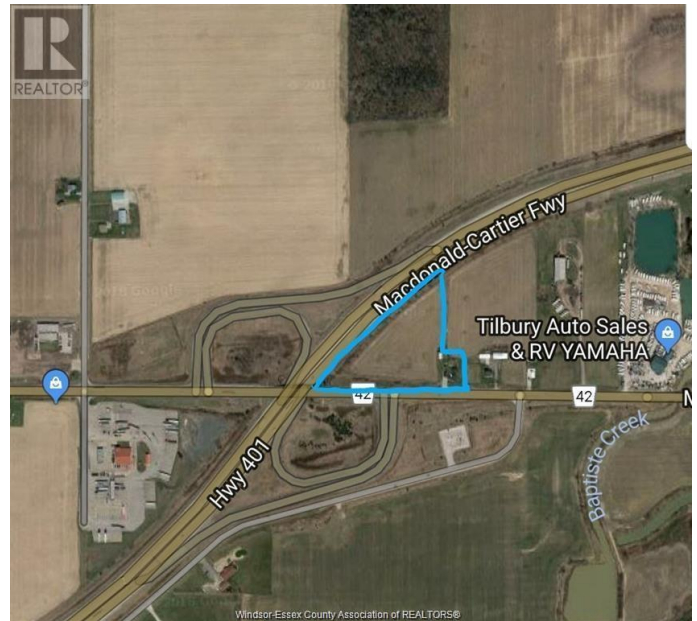
0 Bedroom, 0.00 Bathroom,
Industrial on 0.00 Acres

N/A, Tilbury North, Ontario

Large scale development opportunity located in the emerging market of Tilbury ON. The site measures in at approx 28.42 acres of commercial highway zoned employment land right off the 401 corridor and an approx 30 minute commute to Windsor with the direct highway crossing to the United States. We are open to proposed severances, build-to-suit & land leases on the property. The City has expressed their appreciation and the importance of this property and the fact that it may be suitable not only for commercial use, but warehousing, industrial and a higher density residential use as well. The list price of \$1 is not a representation of the value, instead we are open to proposals, the value of those proposals will ultimately dictate the real value of the property. We are excited to have our first severance of 1.2 acres made for our neighbours McDonald's and a Gas Station. We look forward to hearing your vision and partnering with you on your growth and the growth of this charming town. (id:6289)

Essential Information

Listings #	25007511
Price	\$2,399,000
Bathrooms	0.00
Acres	0.00
Type	Industrial
Sub-Type	Freehold



Community Information

Address	20100 County Rd 42
Subdivision	N/A
City	Tilbury North
Province	Ontario
Postal Code	N0P2L0

Amenities

Features	Treed
----------	-------

Interior

Heating	Natural gas Forced air, Furnace
---------	---------------------------------

Exterior

Lot Description	628.72 X 4.703 ACRES / 4.47 AC
-----------------	--------------------------------

Listing Details

Listing Office	REMAX PREFERRED REALTY LTD. - 586
----------------	-----------------------------------



The trademarks MLS®, Multiple Listing Service® and the associated logos are owned by The Canadian Real Estate Association (CREA) and identify the quality of services provided by real estate professionals who are members of CREA. REALTOR®. Member of CREA and more.

Listing information last updated on October 15th, 2025 at 12:16am EDT