

\$10,000,000 - Pt Lt 20 Concession 7 Concession, Oro-Medonte

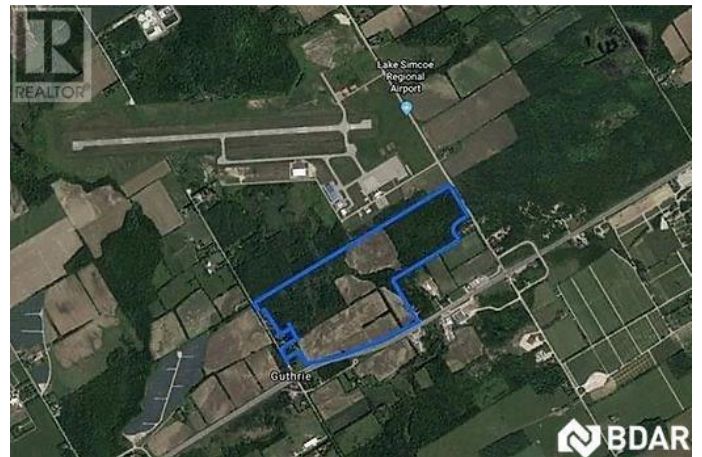
MLS® #30792379

\$10,000,000

0 Bedroom, 0.00 Bathroom,
Agriculture on 137.00 Acres

OR49 - Oro Station, Oro-Medonte, Ontario

ATTENTION INVESTORS AND FARMERS!
THIS PROPERTY ABUTS THE LAKE
SIMCOE REGIONAL AIRPORT (AIRPORT
ALLOWS SMALL JETS). 137 ACRES OF
FARM/VACANT LAND. CURRENTLY BEING
FARMED AS CASH CROP (SOYBEANS).
LOCATED ON HWY 11, LINE 6 AND LINE 7
AND IS MINUTES FROM MAJOR CONCERT
VENUE, BURL'S CREEK (THE VENUE FOR
BOOTS AND HEARTS, AND MORE). HIGH
POTENTIAL FOR FURTHER DEVELOP OR
POSSIBLE AIRPORT EXPANSION. HIGH
EXPOSURE PROPERTY. (id:6289)



Essential Information

Listing #	30792379
Price	\$10,000,000
Bathrooms	0.00
Acres	137.00
Type	Agriculture
Sub-Type	Freehold

Community Information

Address	Pt Lt 20 Concession 7 Concession
Subdivision	OR49 - Oro Station
City	Oro-Medonte
Province	Ontario
Postal Code	L0L2L0

Amenities

Features Country residential

Listing Details

Listing Office RE/MAX Crosstown Realty Inc. Brokerage



The trademarks MLS®, Multiple Listing Service® and the associated logos are owned by The Canadian Real Estate Association (CREA) and identify the quality of services provided by real estate professionals who are members of CREA. REALTOR®. Member of CREA and more.

Listing information last updated on October 12th, 2025 at 5:01am EDT