

\$ - 5035 North Service Road Unit# C-13, Burlington

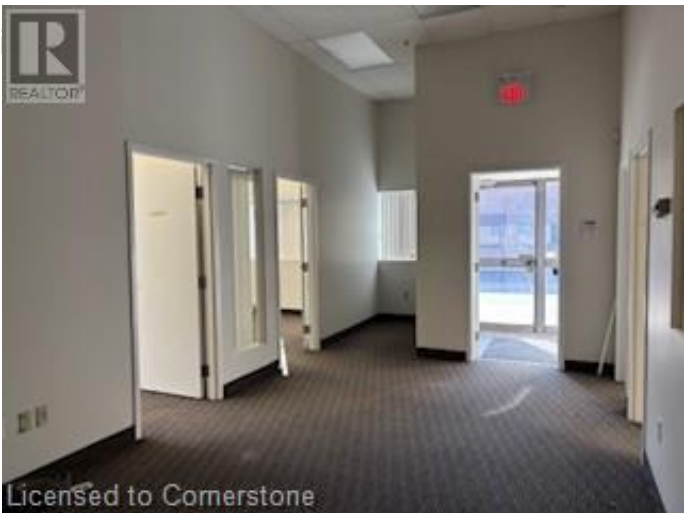
MLS® #40667520

\$

0 Bedroom, 0.00 Bathroom, 3,584 sqft
Industrial on 0.00 Acres

355 - Corporate, Burlington, Ontario

3584 sq. ft. end cap (extra windows) unit now ready for immediate occupancy. 12' x 12' drive in loading door and 1970 sq. ft. nicely finished office space. T.M.I. is estimated at 4.61 per sq. ft. per annum for 2025. (id:6289)



Essential Information

Listing #	40667520
Bathrooms	0.00
Square Footage	3,584
Acres	0.00
Type	Industrial
Sub-Type	Other, See Remarks

Community Information

Address	5035 North Service Road Un
Subdivision	355 - Corporate
City	Burlington
Province	Ontario
Postal Code	L7L5V2

Amenities

Amenities	Public Transit
-----------	----------------

Interior

# of Stories	1
--------------	---

Exterior

Exterior	Concrete
----------	----------

Construction Concrete block, Concrete Walls

Listing Details

Listing Office Martel Commercial Realty Inc.



The trademarks MLS®, Multiple Listing Service® and the associated logos are owned by The Canadian Real Estate Association (CREA) and identify the quality of services provided by real estate professionals who are members of CREA. REALTOR®. Member of CREA and more.

Listing information last updated on October 13th, 2025 at 5:16pm EDT