

\$21,000,000 - 4022 Victoria Avenue, Vineland

MLS® #40764117

\$21,000,000

0 Bedroom, 1.00 Bathroom, 1,700 sqft

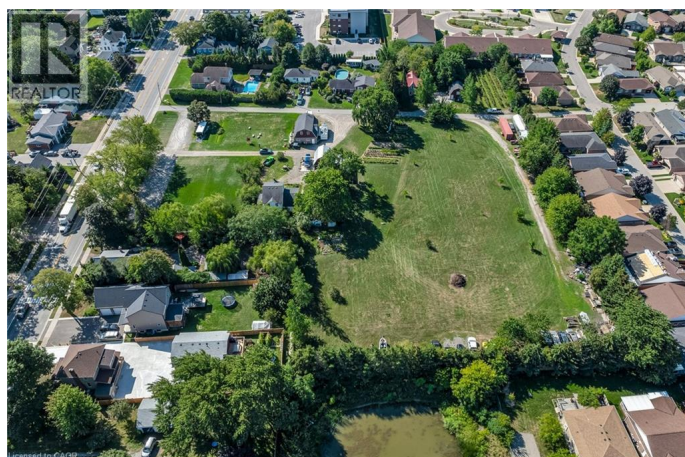
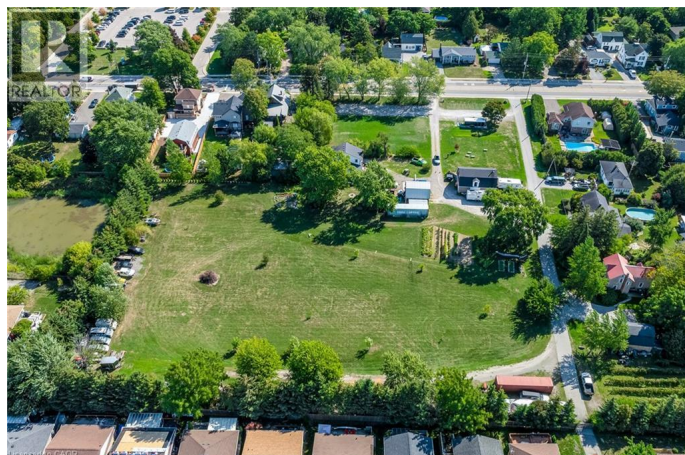
Single Family on 2.00 Acres

980 - Lincoln-Jordan/Vineland, Vineland, Ontario

Welcome to the last of its kind in Vineland!

This property has been in the same family for generations, but it's time to let its full potential be realized. Bring your development ideas, be they residential, commercial, or a mix.

Vineland is booming and this property is only limited by your imagination. This property must be sold with 4014, 4016, and 4018 Victoria Ave. Contract in place to tie into utilities for future development and expansion of the site. Call today to book your showing! (id:6289)



Essential Information

Listing #	40764117
Price	\$21,000,000
Bathrooms	1.00
Square Footage	1,700
Acres	2.00
Type	Single Family
Sub-Type	Freehold

Community Information

Address	4022 Victoria Avenue
Subdivision	980 - Lincoln-Jordan/Vineland
City	Vineland
Province	Ontario
Postal Code	L0R2C0

Amenities

Amenities	Place of Worship, Playground, Schools, Shopping
Parking Spaces	27
Parking	Detached Garage
# of Garages	1

Interior

Interior Features	Ceiling fans
Appliances	Dryer, Refrigerator, Stove, Washer
Heating	Natural gas Forced air
Cooling	Central air conditioning
# of Stories	2
Has Basement	Yes

Exterior

Exterior	Stone, Vinyl siding
----------	---------------------

Listing Details

Listing Office	RE/MAX Escarpment Realty Inc.
----------------	-------------------------------



The trademarks MLS®, Multiple Listing Service® and the associated logos are owned by The Canadian Real Estate Association (CREA) and identify the quality of services provided by real estate professionals who are members of CREA. REALTOR®. Member of CREA and more.

Listing information last updated on October 15th, 2025 at 3:01pm EDT