

\$2,950 - 213 - 15 Wellesley Street W, Toronto (bay Street Corridor)

MLS® #C10426267

\$2,950

0 Bedroom, 0.00 Bathroom, 410 sqft
Office on 0.00 Acres

Bay Street Corridor, Toronto (bay Street Corridor), Ontario

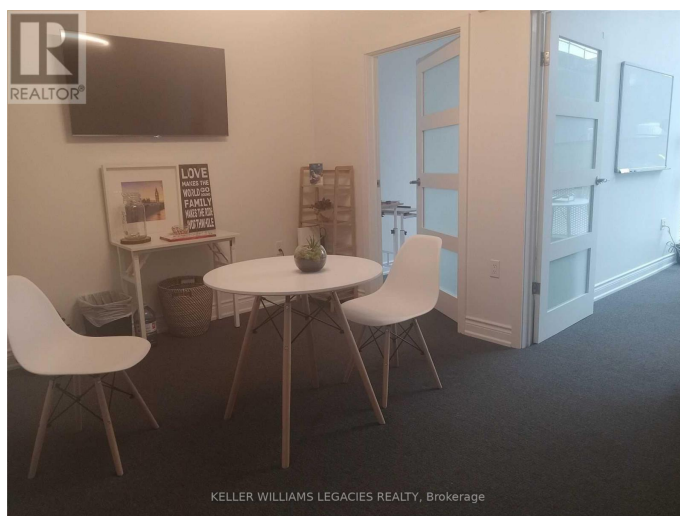
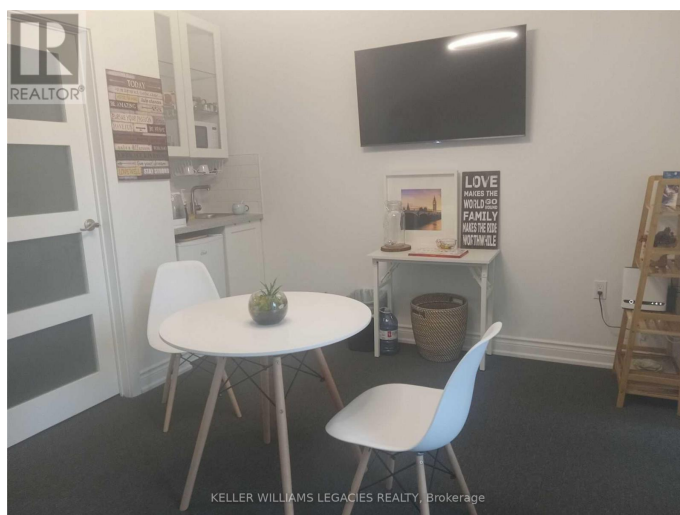
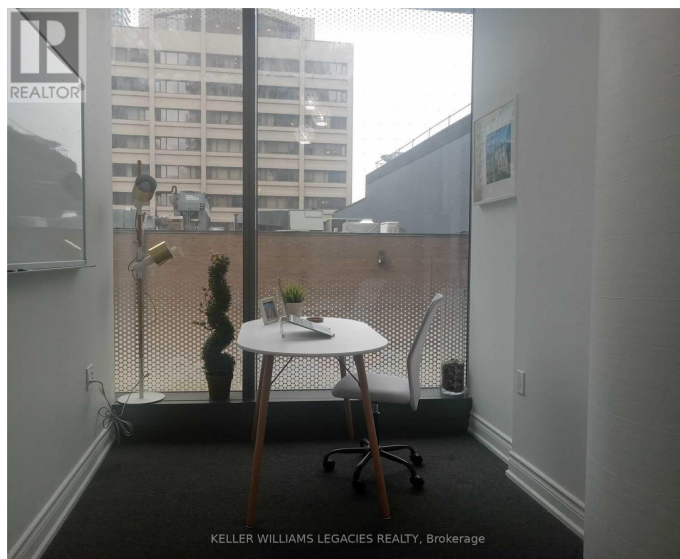
Located in a premium downtown Toronto location, this 410 sq. ft. office space is ideal for professional businesses such as healthcare practitioners, IT companies, accounting firms, and law offices. It includes 3 individual offices with a shared area with kitchenette, fridge, Smart TV, and lounge. High-speed internet and 24/7 access are included, along with Green P underground parking. Perfect for professionals looking for a prime, easily accessible office space. The perfect spot for those looking to work in a vibrant downtown environment. Individual office spaces can be leased separately. (id:6289)

Essential Information

Listing #	C10426267
Price	\$2,950
Bathrooms	0.00
Square Footage	410
Acres	0.00
Type	Office

Community Information

Address	213 - 15 Wellesley Street W
Subdivision	Bay Street Corridor
City	Toronto (bay Street Corridor)
Province	Ontario



Postal Code M4Y0G4

Amenities

Features Elevator

Interior

Heating Electric Forced air

Cooling Fully air conditioned

Exterior

Lot Description Unit=14.5 x 28.1 FT

Listing Details

Listing Office KELLER WILLIAMS LEGACIES REALTY



The trademarks MLS®, Multiple Listing Service® and the associated logos are owned by The Canadian Real Estate Association (CREA) and identify the quality of services provided by real estate professionals who are members of CREA. REALTOR®. Member of CREA and more.

Listing information last updated on October 13th, 2025 at 12:01am EDT