

\$299,000 - 15 - 895 Lawrence Avenue E, Toronto (banbury-Don Mills)

MLS® #C11944955

\$299,000

0 Bedroom, 0.00 Bathroom, 1,506 sqft
Business

Banbury-Don Mills, Toronto (banbury-Don Mills), Ontario

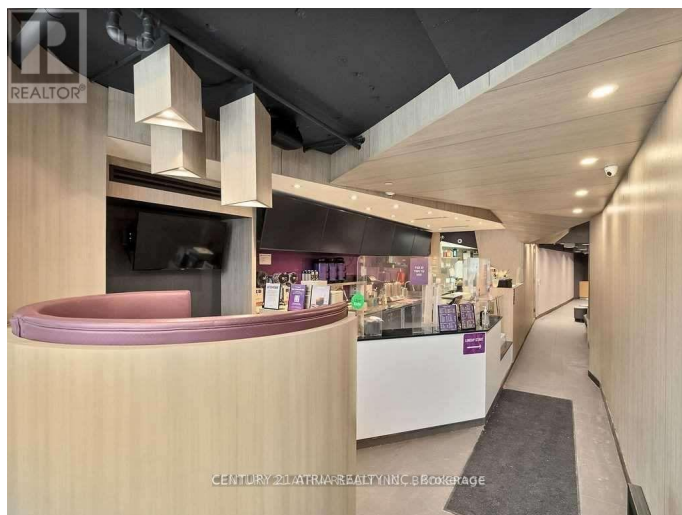
Your opportunity to have more than just a taste of the renowned bubble tea brand, your next business venture. Desirably located in the upscale and accessible neighborhood of North York at Don Mills and Lawrence. This fully equipped shop is a turnkey operation ready for you to takeover and continue to grow its successful operations. Bright and modern interior boasts high ceilings, great conversational seating, and a comfortably minimalistic atmosphere. ****EXTRAS**** All Chattels, Equipment & Fixtures (To Be Detailed). Franchisor Provides Strong Support, Structure & Training. Brand new renovations to be completed. (id:6289)

Essential Information

Listing #	C11944955
Price	\$299,000
Bathrooms	0.00
Square Footage	1,506
Type	Business

Community Information

Address	15 - 895 Lawrence Avenue E
Subdivision	Banbury-Don Mills
City	Toronto (banbury-Don Mills)
Province	Ontario



Postal Code M3C3L2

Interior

Heating Natural gas Forced air

Cooling Fully air conditioned

Listing Details

Listing Office CENTURY 21 ATRIA REALTY INC.



The trademarks MLS®, Multiple Listing Service® and the associated logos are owned by The Canadian Real Estate Association (CREA) and identify the quality of services provided by real estate professionals who are members of CREA. REALTOR®. Member of CREA and more.

Listing information last updated on October 12th, 2025 at 2:16am EDT