

\$1,395 - 500a - 20 Eglinton Avenue E, Toronto (mount Pleasant East)

MLS® #C7406476

\$1,395

0 Bedroom, 0.00 Bathroom, 500 sqft
Retail

Mount Pleasant East, Toronto (mount Pleasant East), Ontario

Fantastic Opportunity To Lease A Spectacular Space, Newly Renovated-Completely Finished Space* In A Professional Building*Right In The Heart Of Yonge & Eglinton* Turn Key Unit* Bright And Spacious Interior* 1 large room * Sink in unit available ** Elevator* Steps From The T.T.C. Subway Stop Surrounded By Restaurants And Retail* Perfect For A School, Service, Or Office Space. **EXTRAS** *** All Utilities included (Power, Heat, Water) ** On site Parking ** Fully Gross Lease (id:6289)

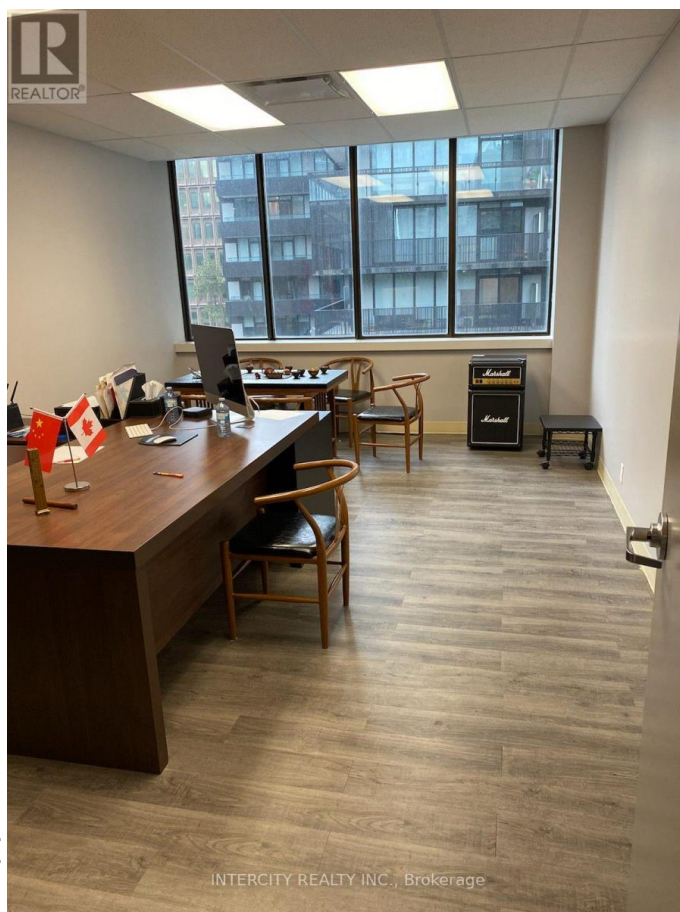
Essential Information

Listing #	C7406476
Price	\$1,395
Bathrooms	0.00
Square Footage	500
Type	Retail

Community Information

Address	500a - 20 Eglinton Avenue E
Subdivision	Mount Pleasant East
City	Toronto (mount Pleasant East)
Province	Ontario
Postal Code	M4P1A6

Amenities



Features	Elevator
Interior	
Heating	Natural gas Other
Cooling	Fully air conditioned
Listing Details	
Listing Office	INTERCITY REALTY INC.



The trademarks MLS®, Multiple Listing Service® and the associated logos are owned by The Canadian Real Estate Association (CREA) and identify the quality of services provided by real estate professionals who are members of CREA. REALTOR®. Member of CREA and more.

Listing information last updated on October 12th, 2025 at 5:01am EDT