

\$ - 700 - 920 Yonge Street, Toronto (annex)

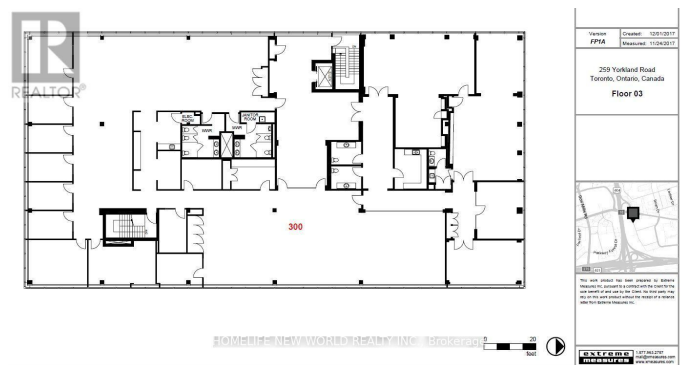
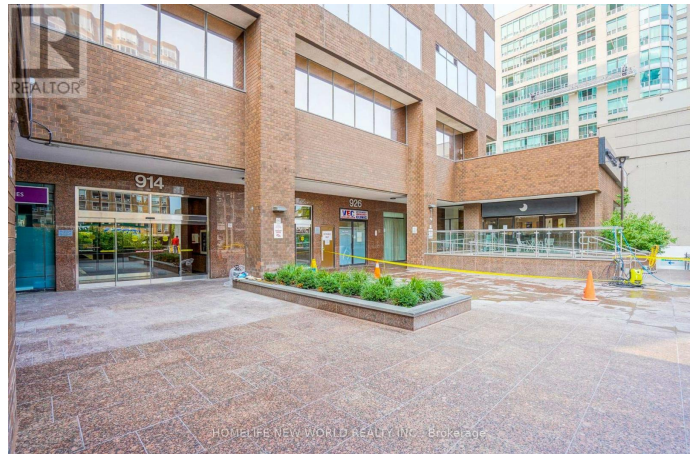
MLS® #C8491066

\$

0 Bedroom, 0.00 Bathroom, 10,600 sqft
Office

Annex, Toronto (annex), Ontario

Tenant Can Lease Smaller Size Unit But Must On 1 Yr Terminat Clause. Professional Office Space With Private Offices. Total 10600 Sqft, Can Be Leased Separately As Well. Easy Access To Bloor And Rosedale Subway Stations. Impressive Building, Lobby, Washrooms And Facilities. 24 Hour Access. On Site Caring Management With Experience. Must Be Viewed To Be Appreciated. Large Windows In Two West Facing Rooms. ****EXTRAS**** Under Ground Parking Is Available with the property paid parking company (id:6289)



Essential Information

Listing #	C8491066
Bathrooms	0.00
Square Footage	10,600
Type	Office

Community Information

Address	700 - 920 Yonge Street
Subdivision	Annex
City	Toronto (annex)
Province	Ontario
Postal Code	M4W3C7

Amenities

Features	Elevator
----------	----------

Interior



Heating	Natural gas	Other
Cooling	Fully air conditioned	

Listing Details

Listing Office HOMELIFE NEW WORLD REALTY INC.



The trademarks MLS®, Multiple Listing Service® and the associated logos are owned by The Canadian Real Estate Association (CREA) and identify the quality of services provided by real estate professionals who are members of CREA. REALTOR®. Member of CREA and more.

Listing information last updated on October 14th, 2025 at 8:31pm EDT