

\$250,000 - 367a&b - 4438 Sheppard Avenue E, Toronto (agincourt South-Malvern West)

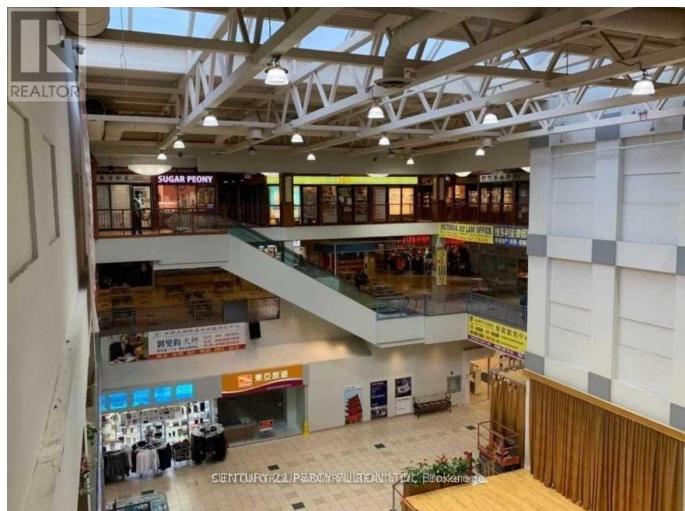
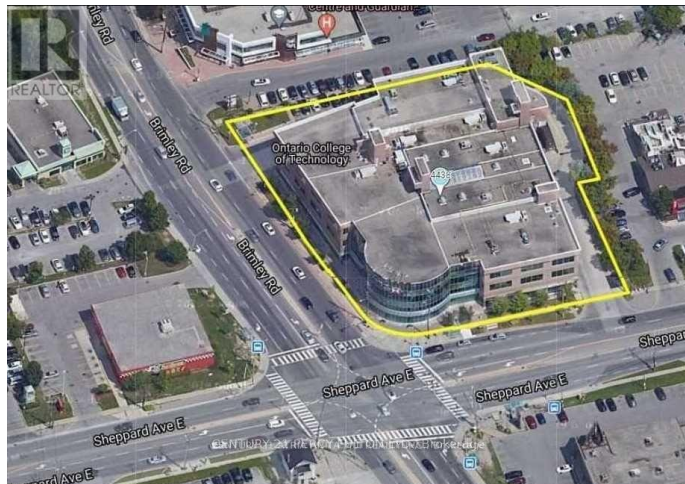
MLS® #E11916951

\$250,000

0 Bedroom, 0.00 Bathroom, 1,537 sqft
Office

Agincourt South-Malvern West, Toronto
(agincourt South-Malvern West), Ontario

*Less than \$100/sft*Bright Corner unit in Oriental shopping center, close to Scarborough town center, hwy 401, TTC at Doorstep, very convenient location. Good mix of Businesses, Rbc bank, Food court, Department store, Travel agency, Massage, Professional offices and schools. two units combined into larger unit(367A & 367B). Bright south west corner unit with unobstructed view from 15 wall to wall windows. good for Place of worship, Real Estate, Lawyers, accountant, Doctors, Tutions (id:6289)



Essential Information

Listing #	E11916951
Price	\$250,000
Bathrooms	0.00
Square Footage	1,537
Type	Office

Community Information

Address	367a&b - 4438 Sheppard Ave
Subdivision	Agincourt South-Malvern We
City	Toronto (agincourt South-Malvern vvest)
Province	Ontario
Postal Code	M1S5V9

Amenities



Amenities	Highway, Public Transit
Features	Elevator
Parking	Garage, Underground
# of Garages	1

Interior

Appliances	Furniture, Window Coverings
Heating	Natural gas Other
Cooling	Fully air conditioned

Listing Details

Listing Office CENTURY 21 PERCY FULTON LTD.



The trademarks MLS®, Multiple Listing Service® and the associated logos are owned by The Canadian Real Estate Association (CREA) and identify the quality of services provided by real estate professionals who are members of CREA. REALTOR®. Member of CREA and more.

Listing information last updated on October 12th, 2025 at 2:31pm EDT