

\$1,750,000 - 9760 Ashburn Road, Whitby

MLS® #E12050638

\$1,750,000

0 Bedroom, 0.00 Bathroom,
Agriculture on 42.89 Acres

Rural Whitby, Whitby, Ontario

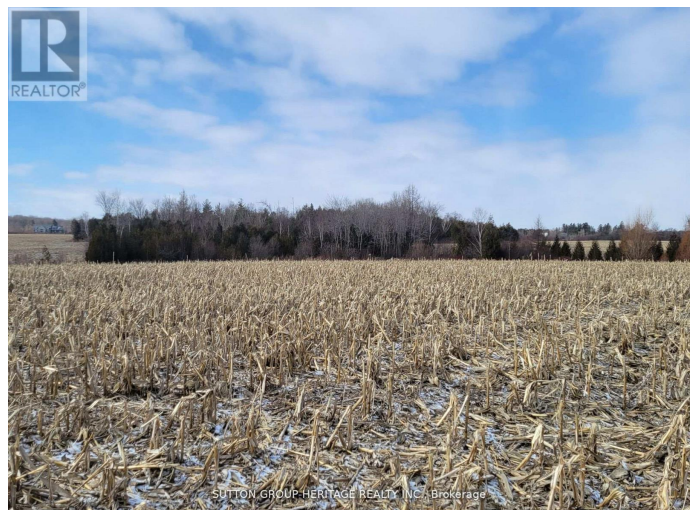
This picturesque and rarely offered 42 acre farm property is located in a tranquil and highly desirable area of Whitby, close to Brooklin, the 407 and the Hamlet of Ashburn. Zoning permits a detached dwelling with ample room to build your dream home, whether you envision a quaint farm house or a luxurious estate. This farm property incorporates valuable natural features with a seasonal creek and trees. The expansive acreage also provides opportunities for agricultural pursuits being tiled and with a portion of the property presently being leased by a farmer. With its beautiful location and abundant natural amenities, this property offers tremendous possibilities! (id:6289)

Essential Information

Listing #	E12050638
Price	\$1,750,000
Bathrooms	0.00
Acres	42.89
Type	Agriculture

Community Information

Address	9760 Ashburn Road
Subdivision	Rural Whitby
City	Whitby
Province	Ontario
Postal Code	L0B1A0



Amenities

Features	Tiled, Conservation/green belt
Parking	No Garage

Interior

Heating	Other
---------	-------

Listing Details

Listing Office SUTTON GROUP-HERITAGE REALTY INC.



The trademarks MLS®, Multiple Listing Service® and the associated logos are owned by The Canadian Real Estate Association (CREA) and identify the quality of services provided by real estate professionals who are members of CREA. REALTOR®. Member of CREA and more.

Listing information last updated on October 14th, 2025 at 3:01pm EDT