

\$4,999,000 - 5210 Bethesda Road, Clarington

MLS® #E12052731

\$4,999,000

0 Bedroom, 0.00 Bathroom, 3,500 sqft

Business on 2527.58 Acres

Rural Clarington, Clarington, Ontario

Investment opportunity in a Prime location in Clarington! 94.867 acres. Operating as a golf course for the last 72 Years. Minutes from Highway 407. Don't Miss out on this amazing opportunity! (id:6289)

Essential Information

| | |
|----------------|-------------|
| Listing # | E12052731 |
| Price | \$4,999,000 |
| Bathrooms | 0.00 |
| Square Footage | 3,500 |
| Acres | 2,527.58 |
| Type | Business |

Community Information

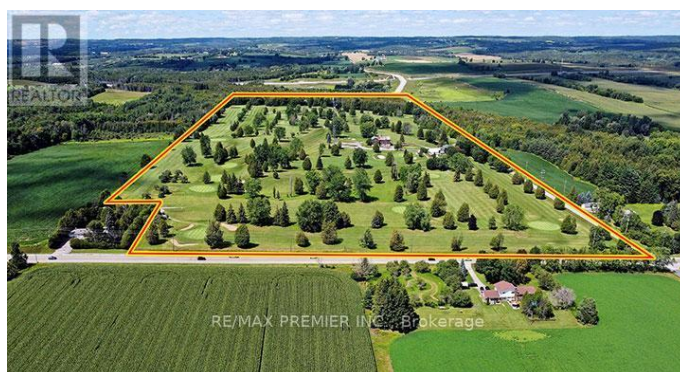
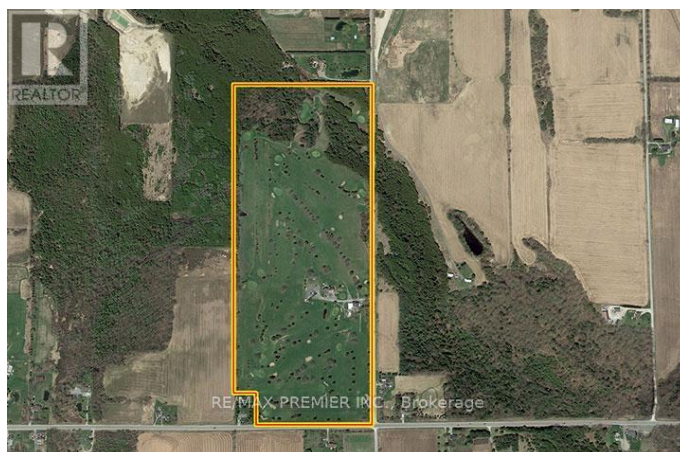
| | |
|-------------|--------------------|
| Address | 5210 Bethesda Road |
| Subdivision | Rural Clarington |
| City | Clarington |
| Province | Ontario |
| Postal Code | L1C3K5 |

Interior

| | |
|---------|----------------|
| Heating | Oil Forced air |
|---------|----------------|

Listing Details

| | |
|----------------|---------------------|
| Listing Office | RE/MAX PREMIER INC. |
|----------------|---------------------|



The trademarks MLS®, Multiple Listing Service® and the associated logos are owned by The Canadian Real Estate Association (CREA) and identify the quality of services provided by real estate professionals who are members of CREA. REALTOR®. Member of CREA and more.

Listing information last updated on October 14th, 2025 at 9:31pm EDT