

\$1,699,999 - Lot 11 Inverlynn Way, Whitby (Lynde Creek)

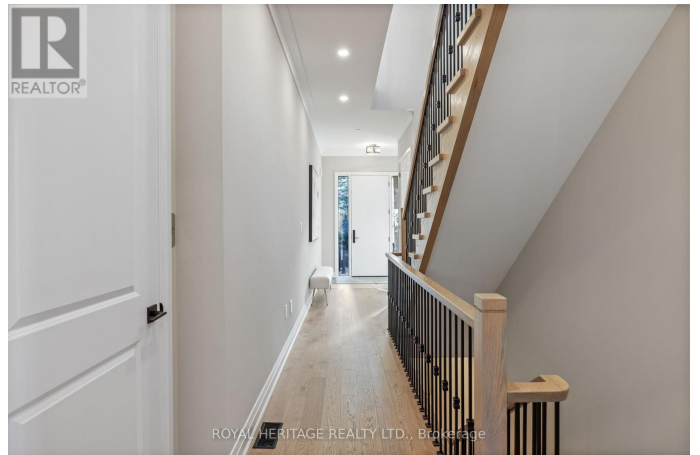
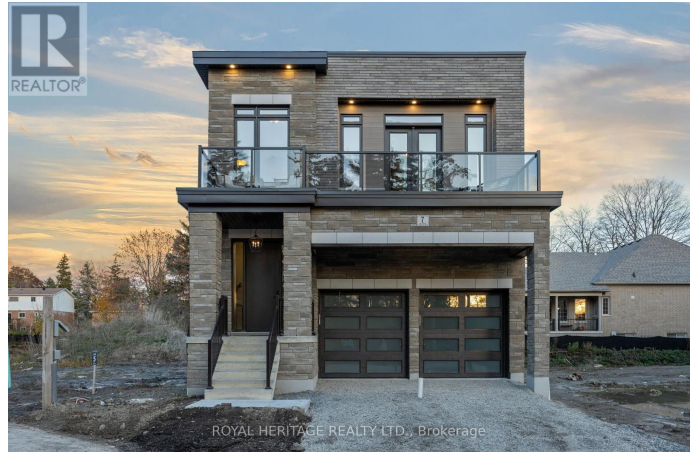
MLS® #E12428958

\$1,699,999

3 Bedroom, 3.00 Bathroom,
Single Family on 0.00 Acres

Lynde Creek, Whitby (Lynde Creek), Ontario

Presenting the McGillivray on Lot #11 in Whitby's Exclusive Gated Community! *** Limited-Time Builder Incentive: Enjoy \$75,000 in free upgrades from The DeNoble Homes DÃ©cor & Design Centre *plus* hardwood flooring throughout the main level and upper hallways! *** Built by an award-winning builder, this brick-and-stone modern home offers 10-ft ceilings, designer custom cabinetry throughout, hot water on demand, and even your own private ELEVATOR. With only 14 lots in this secure, upscale community, this home is perfectly located in a sought-after neighbourhood and school district along Lynde Creek. East-facing backyard for beautiful sunrises, west-facing front yard for stunning sunsets. Don't miss the chance to customize your finishes and create the home of your dreams with DeNoble Homes' renowned quality and craftsmanship! (id:6289)



Essential Information

Listing #	E12428958
Price	\$1,699,999
Bedrooms	3
Bathrooms	3.00
Half Baths	1
Acres	0.00
Type	Single Family
Sub-Type	Freehold

Community Information

Address	Lot 11 Inverlynn Way
Subdivision	Lynde Creek
City	Whitby (Lynde Creek)
Province	Ontario
Postal Code	L1N2S6

Amenities

Amenities	Public Transit, Park, Schools, Fireplace(s)
Features	Cul-de-sac, Ravine, Level
Parking Spaces	4
Parking	Attached Garage, Garage
# of Garages	2

Interior

Appliances	Water Heater - Tankless
Heating	Natural gas Forced air
Cooling	Central air conditioning
Fireplace	Yes
# of Stories	2
Has Basement	Yes

Exterior

Exterior	Brick, Stone
Lot Description	33 x 107 FT
Foundation	Poured Concrete

Listing Details

Listing Office ROYAL HERITAGE REALTY LTD.



The trademarks MLS®, Multiple Listing Service® and the associated logos are owned by The Canadian Real Estate Association (CREA) and identify the quality of services provided by real estate professionals who are members of CREA. REALTOR®. Member of CREA and more.

Listing information last updated on November 2nd, 2025 at 1:47am EDT