

\$2,895 - Main - 5 Aylesford Drive, Toronto (birchcliffe-Cliffside)

MLS® #E12449573

\$2,895

3 Bedroom, 2.00 Bathroom,
Single Family on 50.00 Acres

Birchcliffe-Cliffside, Toronto
(birchcliffe-Cliffside), Ontario

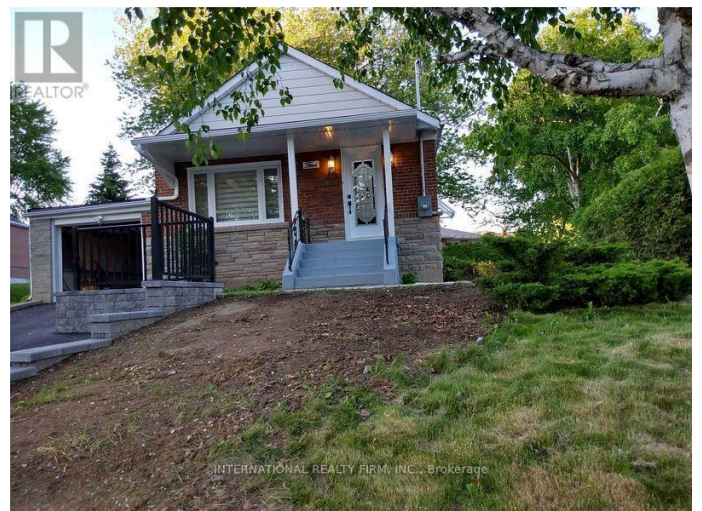
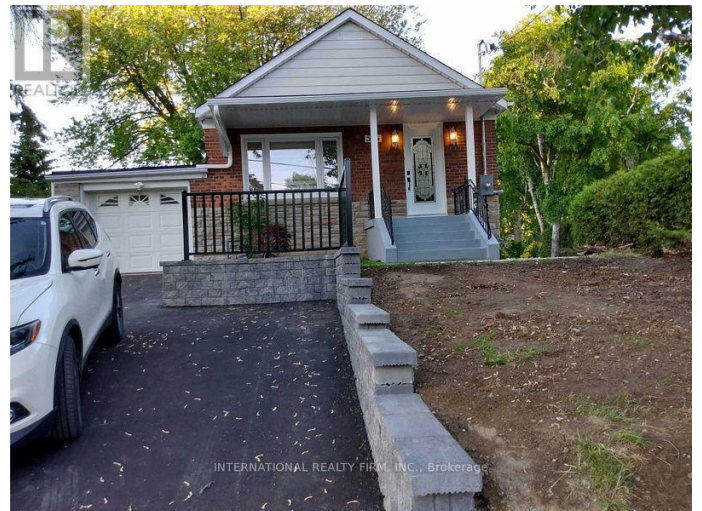
Beautiful G E M Located In Desirable Cliffside Area Bright & open concept in Main floor!!! ***Featuring Three Bedrooms***Prime bedroom with 4pc En-suite!!! Updated kitchen with granite counters!!!Stainless steel appliances!!! ***Exclusive laundry!! ***Guest washroom!!! ***Functional Back-Yard In A Park Like Set-Up!!! ***Mature Trees ***Perennials/Shrubs!!! ***Walk To Schools, Shopping & Transits. ***Minutes To Hospitals, Downtown , Major Highways, Lake, The Bluffs & Rosetta McClain Gardens and much more.. (id:6289)

Essential Information

Listing #	E12449573
Price	\$2,895
Bedrooms	3
Bathrooms	2.00
Acres	50.00
Type	Single Family
Sub-Type	Freehold
Style	Bungalow

Community Information

Address	Main - 5 Aylesford Drive
Subdivision	Birchcliffe-Cliffside



City	Toronto (birchcliffe-Cliffside)
Province	Ontario
Postal Code	M1N1L6

Amenities

Utilities	Electricity, Sewer
Parking Spaces	2
Parking	Attached Garage, Garage
# of Garages	2

Interior

Appliances	Dishwasher, Dryer, Stove, Washer, Refrigerator
Heating	Natural gas Forced air
Cooling	Central air conditioning
Fireplace	Yes
# of Stories	1

Exterior

Exterior	Brick
Foundation	Concrete

Listing Details

Listing Office INTERNATIONAL REALTY FIRM, INC.



The trademarks MLS®, Multiple Listing Service® and the associated logos are owned by The Canadian Real Estate Association (CREA) and identify the quality of services provided by real estate professionals who are members of CREA. REALTOR®. Member of CREA and more.

Listing information last updated on October 30th, 2025 at 5:31pm EDT