

\$1,798,000 - 20 Potts Lane, Scugog

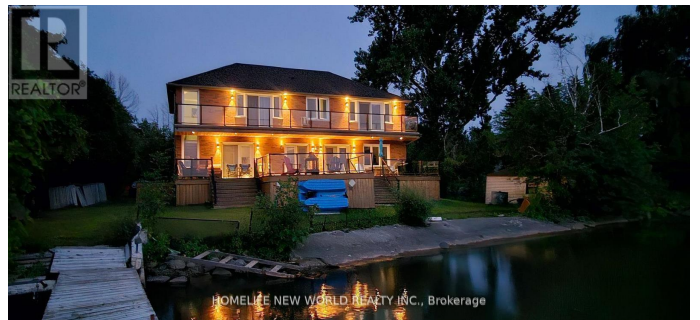
MLS® #E12455146

\$1,798,000

4 Bedroom, 3.00 Bathroom,
Single Family on 0.00 Acres

Rural Scugog, Scugog, Ontario

Tranquil Waterfront Retreat Living On The Shores Of Lake Scugog in The Friendly Community Of Caesarea !Nestled On Approximately 100 Feet of Sand Bottom Shoreline With Million \$\$\$ Western Exposure. This Custom Built 4 Bedroom Home Built On A Very Private 5 Lots over 1/2 Acres. Open Concept Main Floor With Ton Of Natural Light And Breathtaking Water Views. Living Room Features Multiple Walkouts And Brazilian Hardwood Floors. Oversized Gourmet Kitchen, Large Entertainers Island And Stunning Views Of The Lake. Master Bedroom Complete With W/O To Deck Overlooking The Water, 4Pc Ensuite And W/I Closet. This Home Is True Gem With Many Upgrades .Main Deck And Upper Deck With Amazing Space For Entertainment. Gas BBQ Hookup, Dock For All Of Your Summer Fun And Relaxing. Swim, Boat And Fish. Skate ,Snowmobile ,Ice Fishing And Ski In The Winter. Just 15 Minutes From Downtown Amenities Of Port Perry And Around an Hours Drive To Toronto, 407 Is Only 25 Minutes Away. Be Part Of Desirable Williams Point Community Association Has It Own 9 Hole Pitch And Putt ,Golf Course, Club House And Parks. Annual Fee \$150.00/Year Gives You Access To Recreational And Social Events. (id:6289)



Essential Information

Listing #	E12455146
Price	\$1,798,000
Bedrooms	4
Bathrooms	3.00
Half Baths	1
Acres	0.00
Type	Single Family
Sub-Type	Freehold

Community Information

Address	20 Potts Lane
Subdivision	Rural Scugog
City	Scugog
Province	Ontario
Postal Code	L0B1E0

Amenities

Amenities	Fireplace(s)
Features	Irregular lot size
Parking Spaces	6
Parking	Detached Garage, Garage
# of Garages	2
View	Direct Water View, Unobstructed Water View
Is Waterfront	Yes
Waterfront	Waterfront

Interior

Appliances	Water purifier, Dishwasher, Dryer, Humidifier, Hood Fan, Stove, Washer, Refrigerator
Heating	Natural gas Forced air
Cooling	Central air conditioning
Fireplace	Yes
# of Stories	2
Has Basement	Yes

Exterior

Exterior	Brick
Lot Description	100 x 225 FT ; Lot Size Irregular
Foundation	Block

Listing Details

Listing Office HOMELIFE NEW WORLD REALTY INC.



The trademarks MLS®, Multiple Listing Service® and the associated logos are owned by The Canadian Real Estate Association (CREA) and identify the quality of services provided by real estate professionals who are members of CREA. REALTOR®. Member of CREA and more.

Listing information last updated on October 12th, 2025 at 4:46pm EDT