

# \$38,000,000 - 3658 Stouffville Road, Whitchurch-Stouffville

MLS® #N10408233

**\$38,000,000**

3 Bedroom, 1.00 Bathroom,  
Single Family on 25.00 Acres

Rural Whitchurch-Stouffville,  
Whitchurch-Stouffville, Ontario

Location, Location, Location! great opportunity for future development. Corner 45 acres land located on Stouffville Rd/Kennedy, Great Investment In The Fast Growing Community Of Stouffville MINUTES to Hwy 404, Farm House(as is) surrounded by trees. (id:6289)

## Essential Information

Listing #	N10408233
Price	\$38,000,000
Bedrooms	3
Bathrooms	1.00
Acres	25.00
Type	Single Family
Sub-Type	Freehold

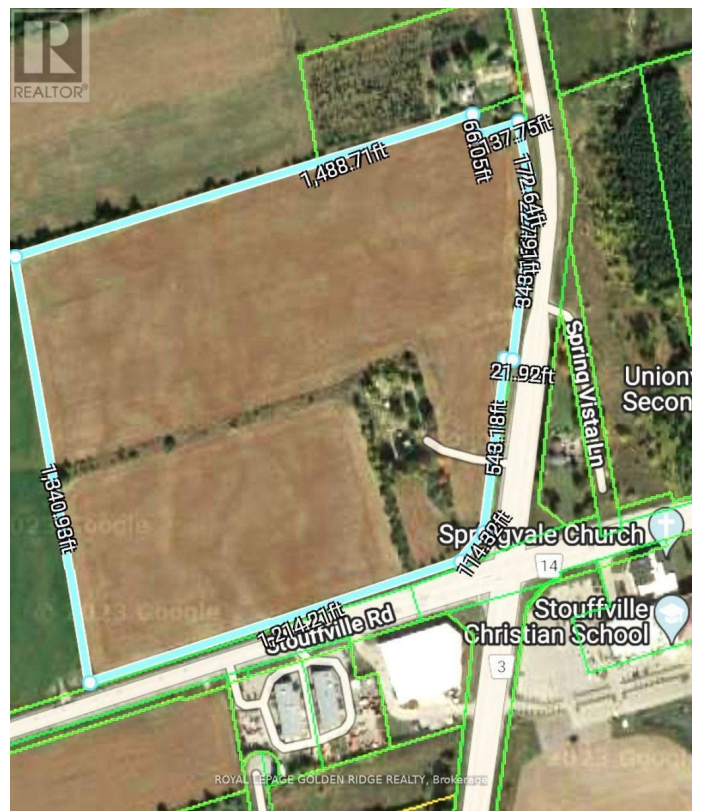
## Community Information

Address	3658 Stouffville Road
Subdivision	Rural Whitchurch-Stouffville
City	Whitchurch-Stouffville
Province	Ontario
Postal Code	L4A7X5

## Amenities

Utilities	Electricity
Parking Spaces	10

## Interior



Heating	Oil Other
# of Stories	2
Has Basement	Yes

## Exterior

Foundation	Unknown
------------	---------

## Listing Details

Listing Office	ROYAL LEPAGE GOLDEN RIDGE REALTY
----------------	----------------------------------



The trademarks MLS®, Multiple Listing Service® and the associated logos are owned by The Canadian Real Estate Association (CREA) and identify the quality of services provided by real estate professionals who are members of CREA. REALTOR®. Member of CREA and more.

Listing information last updated on October 15th, 2025 at 1:16pm EDT