

\$2,300 - 102 - 16 Esna Park Drive, Markham (milliken Mills West)

MLS® #N12003421

\$2,300

0 Bedroom, 0.00 Bathroom, 2,687 sqft
Office on 0.00 Acres

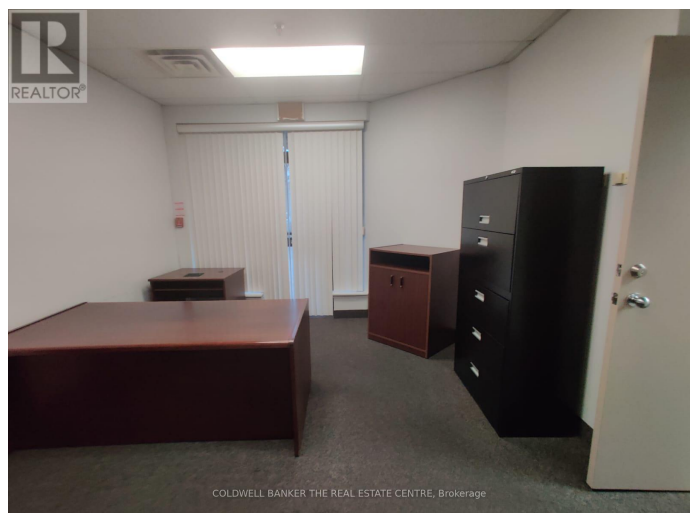
Milliken Mills West, Markham (milliken Mills West), Ontario

This professional all inclusive furnished office space of approx. 250 sq. ft., with private separate entrance, is perfect for a start-up, established business or a business looking to expand in Markham. This property is tailored to meet the needs of businesses seeking a functional workspace. Upon entering, you'll be greeted by a separate entrance leading to additional 140 sq. ft. office space, perfectly suited for meeting, private consultations or specialized work areas. This thoughtful layout ensure privacy and efficiency, allowing you and your business to work seamlessly. The office shares a reception, boardroom, washrooms & kitchen with David Myers Law. Conveniently located close to public transit, Hwy 404 & free parking, making it easily accessible for both employees and clients. (id:6289)

Essential Information

Listing #	N12003421
Price	\$2,300
Bathrooms	0.00
Square Footage	2,687
Acres	0.00
Type	Office

Community Information



Address	102 - 16 Esna Park Drive
Subdivision	Milliken Mills West
City	Markham (milliken Mills West)
Province	Ontario
Postal Code	L3R5X1

Amenities

Amenities	Highway, Public Transit
-----------	-------------------------

Interior

Appliances	Furniture
Heating	Natural gas Other
Cooling	Fully air conditioned

Exterior

Lot Description	Bldg=174214 x 1729 FT
-----------------	-----------------------

Listing Details

Listing Office	COLDWELL BANKER THE REAL ESTATE CENTRE
----------------	----------------------------------------



The trademarks MLS®, Multiple Listing Service® and the associated logos are owned by The Canadian Real Estate Association (CREA) and identify the quality of services provided by real estate professionals who are members of CREA. REALTOR®. Member of CREA and more.

Listing information last updated on October 13th, 2025 at 8:16am EDT