

# \$4,888,000 - 20590 Hwy 11, King

MLS® #N12336171

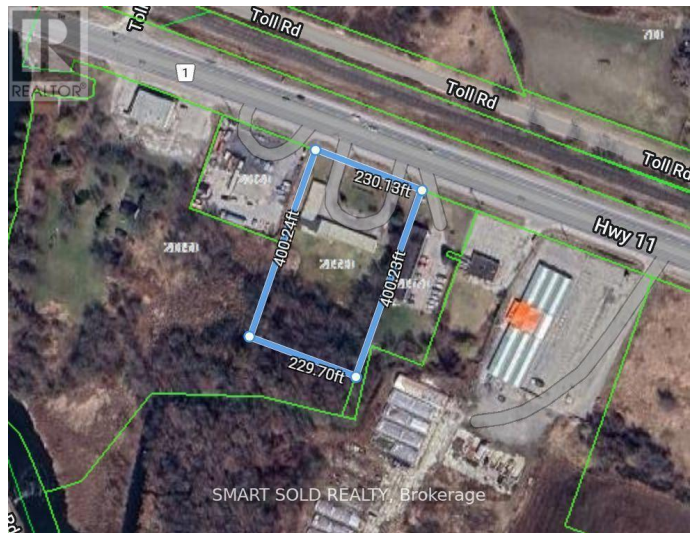
**\$4,888,000**

0 Bedroom, 0.00 Bathroom, 2 sqft

Retail on 2.11 Acres

Rural King, King, Ontario

NEW PRICE! Attention Investors And Developers. Rarely Found 2.11 Acres Of Land On Hwy 11 W. Broad Commercial Zoning available, including but not limited to Hotel, Motel, Automobile sales and service, Self-storage, Restaurant, Retail and Agriculture-related!!! Ideal For Almost Any Kinds Of Business! Existing 15 Motel rooms newly renovated and ready for running business. Steps To Fast Growing/Developing Bradford & New Few Hundred Acres Development At Bathurst & Yonge. Mins Drive To Bradford Go, 5 Mins Drive To East Gwillimbury Center. Surrounded By Local Residential Areas With Rapid Increased Population. **\*\*EXTRAS\*\*** Commercial Uses permitted: including but not limited to Motel, Hotel, Automobile sales and service, Self-storage, Restaurant, Retail and Agriculture-related!!! (id:6289)



## Essential Information

Listing #	N12336171
Price	\$4,888,000
Bathrooms	0.00
Square Footage	2
Acres	2.11
Type	Retail

## Community Information

Address	20590 Hwy 11
---------	--------------

Subdivision Rural King  
City King  
Province Ontario  
Postal Code L3Z2A8

### **Amenities**

Amenities Public Transit, Recreation

### **Interior**

Heating Natural gas Forced air

Cooling Fully air conditioned

### **Listing Details**

Listing Office SMART SOLD REALTY



The trademarks MLS®, Multiple Listing Service® and the associated logos are owned by The Canadian Real Estate Association (CREA) and identify the quality of services provided by real estate professionals who are members of CREA. REALTOR®. Member of CREA and more.

Listing information last updated on October 26th, 2025 at 8:46pm EDT