

# \$1,000 - 105 - 9170 County Rd. 93, Midland

MLS® #S11912836

**\$1,000**

0 Bedroom, 0.00 Bathroom, 924 sqft

Office on 0.00 Acres

Midland, Midland, Ontario

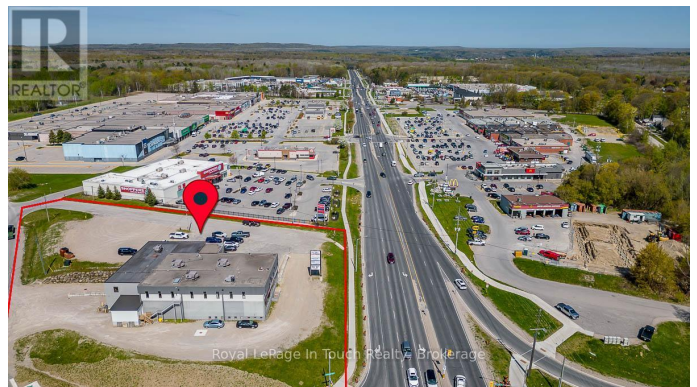
Office Space For Only \$1,000 Per Month. Enjoy Maximum Exposure With This Prime Retail Corner Located At The Gateway To Midlands Main Retail Corridor. With An Average Annual Daily Traffic (AADT) Count Of 17,300 Vehicles In 2022, This Is One Of The Busiest Corners Of All Simcoe County Roads. Signalized Intersection At The Corner Of Hwy 93 & Young St. Offers Easy Access & Direct Frontage Along Three Main Roads. Ample On-Site Parking & Very Close To Public Transit Stop. Surrounded By National & International Retail Brands Offering Both Synergy And Stability To The Strong Retail Node. Monthly Rent Includes TMI & Utilities. (id:6289)

## Essential Information

Listing #	S11912836
Price	\$1,000
Bathrooms	0.00
Square Footage	924
Acres	0.00
Type	Office

## Community Information

Address	105 - 9170 County Rd. 93
Subdivision	Midland
City	Midland
Province	Ontario



Postal Code L4R4K4

## Amenities

Amenities Highway, Public Transit

Features Elevator

## Interior

Heating Natural gas Other

Cooling Fully air conditioned

## Exterior

Lot Description 254 x 331 FT

## Listing Details

Listing Office Royal LePage In Touch Realty



The trademarks MLS®, Multiple Listing Service® and the associated logos are owned by The Canadian Real Estate Association (CREA) and identify the quality of services provided by real estate professionals who are members of CREA. REALTOR®. Member of CREA and more.

Listing information last updated on October 12th, 2025 at 10:01am EDT