

\$ - 30 Spence Avenue, Springwater (midhurst)

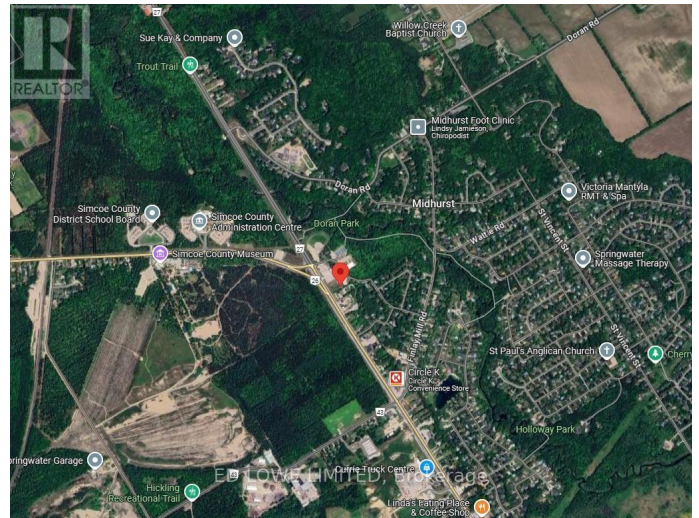
MLS® #S11923993

\$

0 Bedroom, 0.00 Bathroom, 3,500 sqft
Retail on 0.00 Acres

Midhurst, Springwater (midhurst), Ontario

3500 s.f. of space inside a Brand New 8500 sf building to be built for Lease with great exposure to Bayfield St N (Hwy 26) just outside of Barrie before the split of 26/27 to Collingwood or Elmvale/Midhurst. General Commercial CG-37 Zoning permitting retail/commercial/office uses. Ideal for Nursery School/daycare with outdoor play area possible, take-out restaurant, fitness studio or medical clinic, professional office, destination retail store or personal service shop and many more. See linked feature sheet for zoning. Space can be demised 1000 s.f. - 3500 s.f. \$18.00/s.f./yr & est. TMI @ \$8.00/s.f./yr. (id:6289)



Essential Information

Listing #	S11923993
Bathrooms	0.00
Square Footage	3,500
Acres	0.00
Type	Retail

Community Information

Address	30 Spence Avenue
Subdivision	Midhurst
City	Springwater (midhurst)
Province	Ontario
Postal Code	L0L1X1

Interior



Heating	Natural gas Forced air
Cooling	Fully air conditioned

Exterior

Lot Description	192 x 387 FT
-----------------	--------------

Listing Details

Listing Office	ED LOWE LIMITED
----------------	-----------------



The trademarks MLS®, Multiple Listing Service® and the associated logos are owned by The Canadian Real Estate Association (CREA) and identify the quality of services provided by real estate professionals who are members of CREA. REALTOR®. Member of CREA and more.

Listing information last updated on October 11th, 2025 at 6:46pm EDT