

\$1,750 - 4570 Penetanguishene Road, Springwater (hillsdale)

MLS® #S12056608

\$1,750

0 Bedroom, 0.00 Bathroom, 1,800 sqft
Retail on 0.00 Acres

Hillsdale, Springwater (hillsdale), Ontario

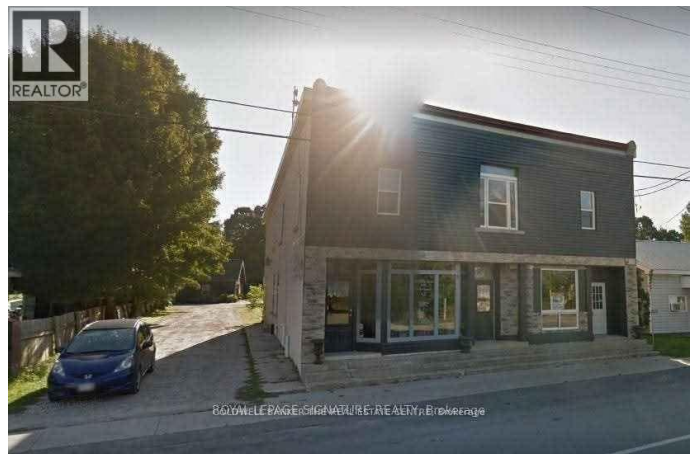
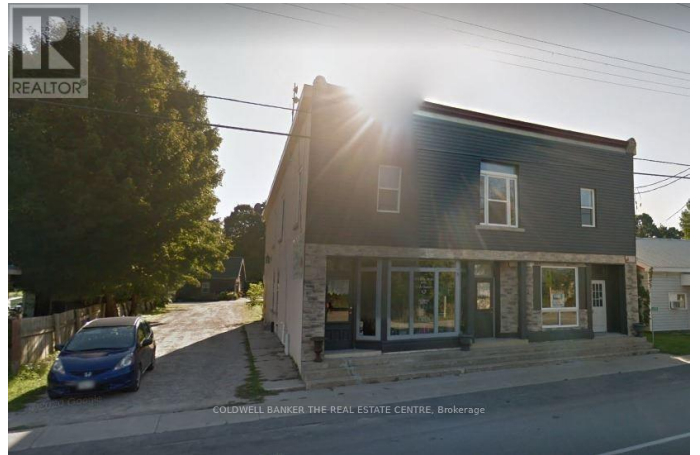
Three 650-700 square units available for lease for Office / Commercial / Retail on Busy Hwy 93, 20 Minutes North Of Barrie In Hillsdale. Ideal For Medical, Dental, Chiropractic, Physio, Veterinarian Clinic, Yoga studio, day care centre, store/retail, and Other Professional Services. Consists Of 3 Units plus a spacious basement plus a 2-bedroom apartment on the upper level. Can Lease One Unit Or ALL. Each Unit Is Approximately 650 to 700 Sqft. Plenty Of Free Parking fits 16 vehicles. Large backyard. Convenient location just 3 minutes from the highway. Spaces can be renovated as desired. (id:6289)

Essential Information

Listing #	S12056608
Price	\$1,750
Bathrooms	0.00
Square Footage	1,800
Acres	0.00
Type	Retail

Community Information

Address	4570 Penetanguishene Road
Subdivision	Hillsdale
City	Springwater (hillsdale)
Province	Ontario



Postal Code L0L1V0

Amenities

Amenities Highway

Parking Spaces 20

Interior

Heating Natural gas Other

Cooling Fully air conditioned

Exterior

Lot Description 66 x 164.7 FT

Listing Details

Listing Office COLDWELL BANKER THE REAL ESTATE CENTRE



The trademarks MLS®, Multiple Listing Service® and the associated logos are owned by The Canadian Real Estate Association (CREA) and identify the quality of services provided by real estate professionals who are members of CREA. REALTOR®. Member of CREA and more.

Listing information last updated on October 14th, 2025 at 9:01pm EDT