

\$1,545,000 - 238 Robins Point Road, Tay (victoria Harbour)

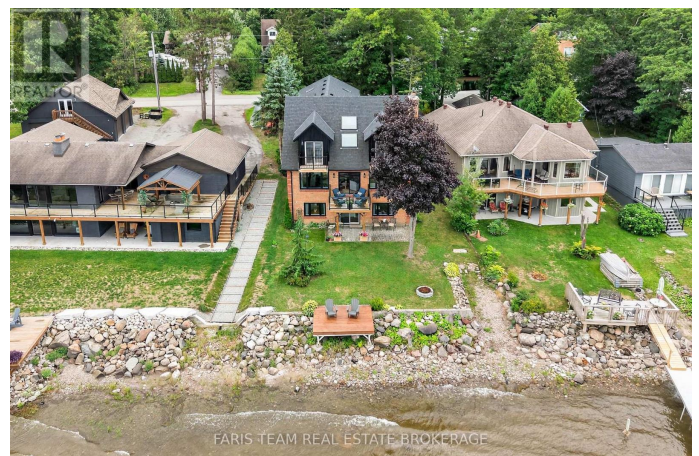
MLS® #S12452288

\$1,545,000

5 Bedroom, 4.00 Bathroom,
Single Family on 0.00 Acres

Victoria Harbour, Tay (victoria Harbour),
Ontario

Top 5 Reasons You Will Love This Home: 1) Enjoy stunning waterfront living with over 50' of Georgian Bay frontage, offering expansive views and a layout that easily adapts to your needs 2) Featuring three distinct private living areas, including a fully finished lower level with its own kitchen, living space, bedroom, and bathroom, as well as an upper-level suite with a bedroom, bathroom, family room, and kitchenette, perfect for guests or rental opportunities 3) The spacious main level offers an open, flowing design with a cozy fireplace, a gourmet kitchen equipped with granite countertops and built-in appliances, as well as a quiet sitting room ideal for a home office, and a conveniently located laundry area 4) Thoughtfully updated between 2020 and 2024 with new heating and cooling systems, updated windows and patio doors, a refreshed roof complete with skylights, modern siding, and newly built decks 5) Located in the heart of Victoria Harbour with quick access to everyday amenities and Highway 400, making travel to Midland, Orillia, Barrie, and Toronto fast and convenient. 3,147 square feet plus a finished basement. (id:6289)



Essential Information

Listing # S12452288

Price	\$1,545,000
Bedrooms	5
Bathrooms	4.00
Half Baths	1
Acres	0.00
Type	Single Family
Sub-Type	Freehold

Community Information

Address	238 Robins Point Road
Subdivision	Victoria Harbour
City	Tay (victoria Harbour)
Province	Ontario
Postal Code	L0K2A0

Amenities

Amenities	Fireplace(s)
Features	Irregular lot size, In-Law Suite
Parking Spaces	8
Parking	Attached Garage, Garage
# of Garages	2
View	View, Direct Water View
Is Waterfront	Yes
Waterfront	Waterfront

Interior

Appliances	Cooktop, Dishwasher, Dryer, Oven, Stove, Washer, Refrigerator
Heating	Natural gas Forced air
Cooling	Central air conditioning
Fireplace	Yes
# of Fireplaces	2
# of Stories	2
Has Basement	Yes
Basement	Walk out

Exterior

Exterior	Aluminum siding, Brick
Lot Description	50 x 156.7 FT under 1/2 acre
Foundation	Block

Listing Details

Listing Office FARIS TEAM REAL ESTATE BROKERAGE



The trademarks MLS®, Multiple Listing Service® and the associated logos are owned by The Canadian Real Estate Association (CREA) and identify the quality of services provided by real estate professionals who are members of CREA. REALTOR®. Member of CREA and more.

Listing information last updated on October 13th, 2025 at 6:16am EDT