

\$10,000,000 - Pt Lt20 Concession 7 Drive, Oro-Medonte

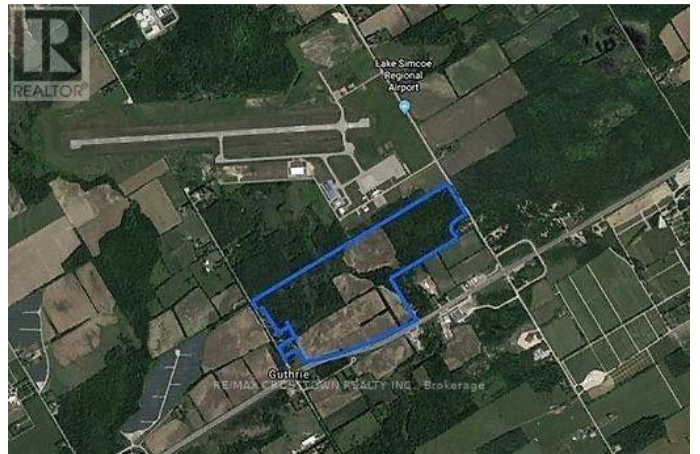
MLS® #S4701501

\$10,000,000

0 Bedroom, 0.00 Bathroom,
Agriculture on 100.00 Acres

Rural Oro-Medonte, Oro-Medonte, Ontario

Attention Investors And Farmers! This Property Abuts The Lake Simcoe Regional Airport (Airport Allows Small Jets). 137 Acres Of Farm/Vacant Land. Currently Being Farmed As Cash Crop (Soybeans). Located On Hwy 11, Line 6 And Line 7 And Is Minutes From Major Concert Venue, Burl's Creek (The Venue For Boots And Hearts, And More). High Potential For Further Develop Or Possible Airport Expansion. High Exposure Property. (id:6289)



Essential Information

Listings #	S4701501
Price	\$10,000,000
Bathrooms	0.00
Acres	100.00
Type	Agriculture

Community Information

Address	Pt Lt20 Concession 7 Drive
Subdivision	Rural Oro-Medonte
City	Oro-Medonte
Province	Ontario
Postal Code	L0L2L0

Interior

Heating	Other
---------	-------

Listing Details

Listing Office

RE/MAX CROSSTOWN REALTY INC.



The trademarks MLS®, Multiple Listing Service® and the associated logos are owned by The Canadian Real Estate Association (CREA) and identify the quality of services provided by real estate professionals who are members of CREA. REALTOR®. Member of CREA and more.

Listing information last updated on October 12th, 2025 at 5:01am EDT