

\$ - 100 - 34 Village Centre Place, Mississauga (city Centre)

MLS® #W10422727

\$

0 Bedroom, 2.00 Bathroom, 1,578 sqft
Office

City Centre, Mississauga (city Centre), Ontario

Work Culture is changing. With workspaces competing with employee's home offices, 34 Village Place in the Sherwoodtowne Office Complex is the answer with an enticing 'liveable office'. This 1,578 SF office space end unit has a residential design with bright windows, combination of reception (shared), office, open office/collaboration areas & kitchen. This turnkey space is perfect for businesses looking for a professional and polished environment to work in Downtown Mississauga. Uses include Office & Medical Uses. (id:6289)

Essential Information

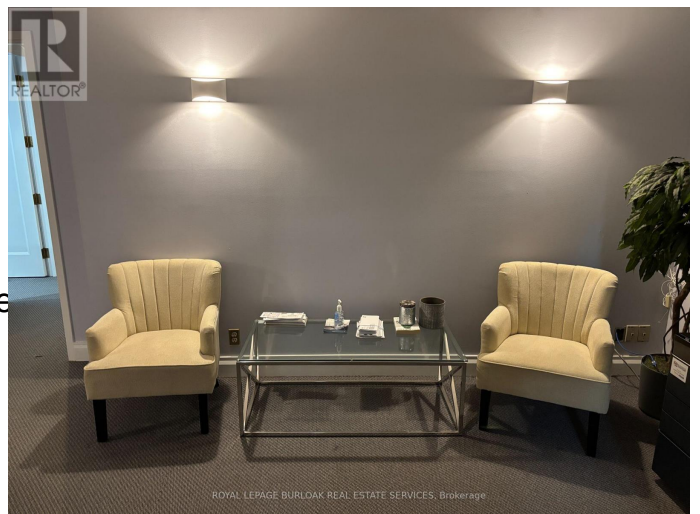
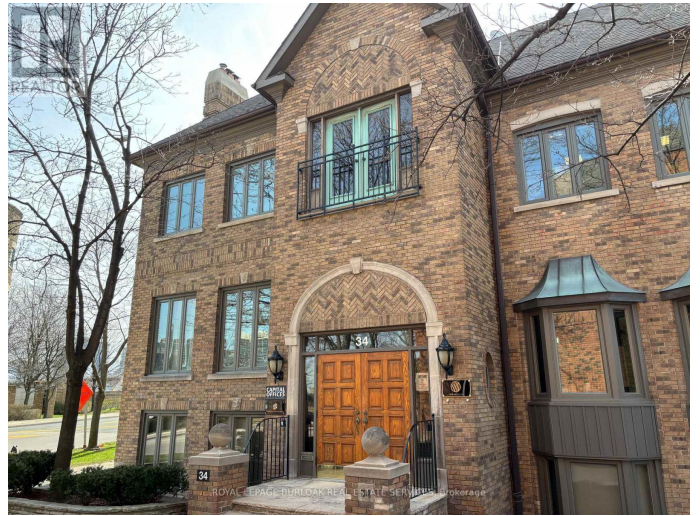
Listing #	W10422727
Bathrooms	2.00
Square Footage	1,578
Type	Office

Community Information

Address	100 - 34 Village Centre Place
Subdivision	City Centre
City	Mississauga (city Centre)
Province	Ontario
Postal Code	L4Z1V9

Amenities

Amenities	Highway, Public Transit
-----------	-------------------------



Interior

Heating	Natural gas Forced air
Cooling	Fully air conditioned

Listing Details

Listing Office ROYAL LEPAGE BURLOAK REAL ESTATE SERVICES



The trademarks MLS®, Multiple Listing Service® and the associated logos are owned by The Canadian Real Estate Association (CREA) and identify the quality of services provided by real estate professionals who are members of CREA. REALTOR®. Member of CREA and more.

Listing information last updated on October 13th, 2025 at 4:01am EDT