

\$ - 7 - 3325 Harvester Road, Burlington (industrial Burlington)

MLS® #W11931554

\$

0 Bedroom, 1.00 Bathroom, 1,603 sqft
Retail on 0.00 Acres

Industrial Burlington, Burlington (industrial Burlington), Ontario

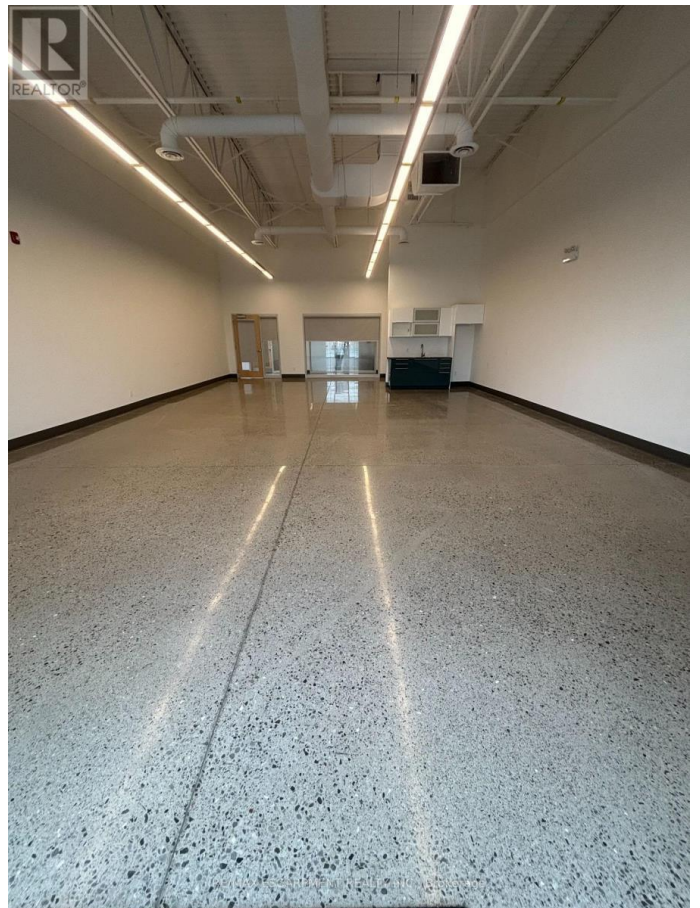
Calling all flex space/office users looking for creative, collaborative space! The Empire is a modern, open concept office/flex use building with 18 foot ceilings, beautiful polished floors and tons of natural light. This unit that nice windows for great, natural light, its own kitchenette, washroom and exterior & interior corridor entry door. Turn-key, move-in-ready space plus some great common areas including a terrific rooftop breakout room with kitchen and outdoor patio, elevator and wheelchair accessible washrooms. Conveniently located on Harvester with easy access to public transit, highways, ample parking and separate entrance for ease of access or curbside pick-up. (id:6289)

Essential Information

Listing #	W11931554
Bathrooms	1.00
Square Footage	1,603
Acres	0.00
Type	Retail

Community Information

Address	7 - 3325 Harvester Road
Subdivision	Industrial Burlington
City	Burlington (industrial Burlington)



Province	Ontario
Postal Code	L7N3N2

Amenities

Amenities	Highway, Public Transit
Features	Elevator

Interior

Heating	Natural gas Other
Cooling	Fully air conditioned

Exterior

Lot Description	202.1 x 427.8 FT
-----------------	------------------

Listing Details

Listing Office	RE/MAX ESCARPMENT REALTY INC.
----------------	-------------------------------



The trademarks MLS®, Multiple Listing Service® and the associated logos are owned by The Canadian Real Estate Association (CREA) and identify the quality of services provided by real estate professionals who are members of CREA. REALTOR®. Member of CREA and more.

Listing information last updated on October 11th, 2025 at 11:46pm EDT