

\$ - 2 - 700 Burnhamthorpe Road W, Mississauga (mavis-Erindale)

MLS® #W12022655

\$

0 Bedroom, 0.00 Bathroom, 5,239 sqft
Retail

Mavis-Erindale, Mississauga (mavis-Erindale),
Ontario

High Traffic Exposure within the densely populated rapidly growing Square One District. Directly on the corner of Mavis/Burnhamthorpe Rd W. Transit at doorstep, min to 400 series highways. Zoning allows for a wide range of uses. Some automotive related uses allowed. (id:6289)

Essential Information

Listing #	W12022655
Bathrooms	0.00
Square Footage	5,239
Type	Retail

Community Information

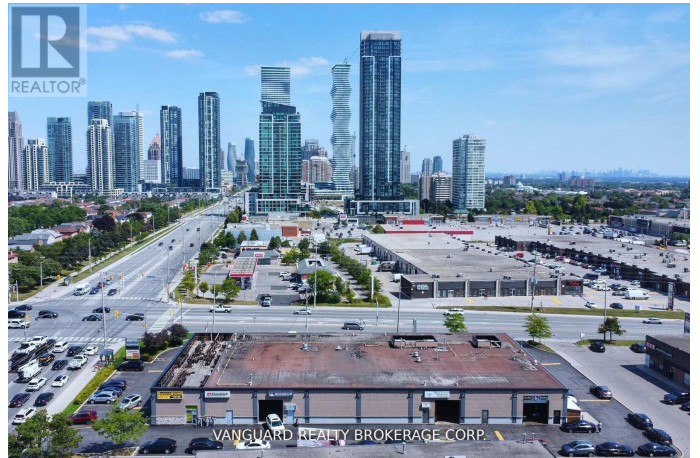
Address	2 - 700 Burnhamthorpe Road
Subdivision	Mavis-Erindale
City	Mississauga (mavis-Erindale)
Province	Ontario
Postal Code	L5C2R9

Interior

Heating	Natural gas Other
Cooling	Partially air conditioned

Listing Details

Listing Office	VANGUARD REALTY BROKERAGE CORP.
----------------	---------------------------------



The trademarks MLS®, Multiple Listing Service® and the associated logos are owned by The Canadian Real Estate Association (CREA) and identify the quality of services provided by real estate professionals who are members of CREA. REALTOR®. Member of CREA and more.

Listing information last updated on October 13th, 2025 at 9:16pm EDT