

\$ - 304 - 672 Dupont Street, Toronto (dovercourt-Wallace Emerson-Junction)

MLS® #W12024100

\$

0 Bedroom, 0.00 Bathroom, 1,176 sqft
Office

Dovercourt-Wallace Emerson-Junction,
Toronto (dovercourt-Wallace
Emerson-Junction), Ontario

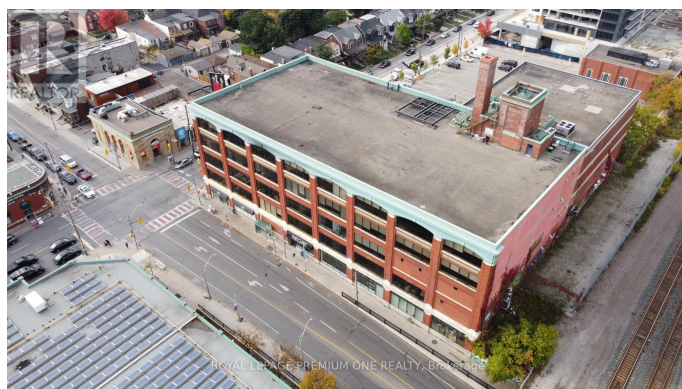
Flex office space located on the 3rd floor, south facing, in one of Toronto's most unique buildings located at the corner of Christie & Dupont. This space consists of a large reception area, storage/break room, 4 large offices (1 of which can be used as a boardroom). Features 12 foot ceilings, bright sun filled windows, allowing for natural flow of light. The building features wide and spacious corridors and has Direct Bell Fiber High Speed Internet. Close proximity to stores and public transit at the doorstep. Additional rent is inclusive of Heat, Hydro and Water. (id:6289)

Essential Information

Listing #	W12024100
Bathrooms	0.00
Square Footage	1,176
Type	Office

Community Information

Address	304 - 672 Dupont Street
Subdivision	Dovercourt-Wallace Emerson-Junction
City	Toronto (dovercourt-Wallace Emerson-Junction)
Province	Ontario
Postal Code	M6G1Z6



Amenities

Features Elevator

Interior

Heating Natural gas Other
Cooling Fully air conditioned

Listing Details

Listing Office ROYAL LEPAGE PREMIUM ONE REALTY



The trademarks MLS®, Multiple Listing Service® and the associated logos are owned by The Canadian Real Estate Association (CREA) and identify the quality of services provided by real estate professionals who are members of CREA. REALTOR®. Member of CREA and more.
Listing information last updated on October 13th, 2025 at 7:01pm EDT