

# \$1,750,000 - 31 Tyndall Avenue, Toronto (south Parkdale)

MLS® #W12049964

**\$1,750,000**

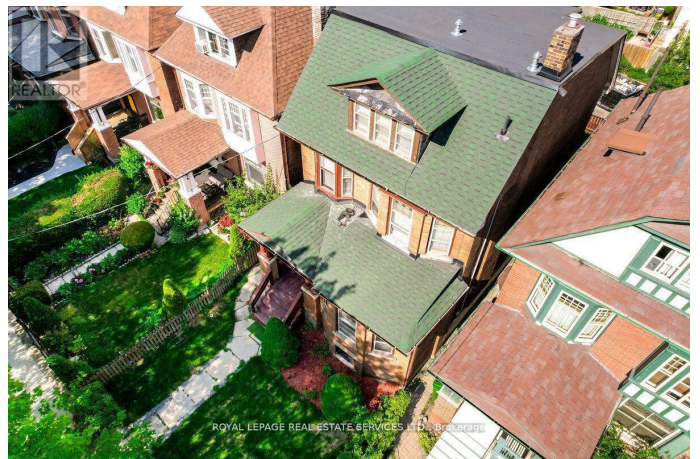
7 Bedroom, 4.00 Bathroom,  
Multi-family on 0.00 Acres

South Parkdale, Toronto (south Parkdale),  
Ontario

Great Opportunity To Own Gorgeous Fully Renovated Triplex+1(Basement), "Edwardian House" Located At Desirable South Parkdale Area, South Of King And West Of Dufferin, 10 Mins To Downtown Core, Steps Away From TTC, The Ex, Liberty Villiage, Waterfront, CURRENTLY Fully Leased. The Brochure With Rent Roll Breakdown And Detailed Property Information Is Available Main Floor/2 Bedrooms, 2nd Floor/2 Bedrooms, 3rd Floor/2 Bedrooms, Basement/1 Bedroom, 4 Lane Parking At The Rear. This property qualifies for agarden suite build, in the rear portion of the lot, under Toronto's new garden suite program. The maximum size of a permitted 2-storey as of right garden suite build appears to be approximately 1,055 square feet total (over two floors, main and upper).And full basement also possible.The report is attached (id:6289)

## Essential Information

<b>Listing #</b>	W12049964
<b>Price</b>	\$1,750,000
<b>Bedrooms</b>	7
<b>Bathrooms</b>	4.00
<b>Acres</b>	0.00
<b>Type</b>	Multi-family



## Community Information

Address	31 Tyndall Avenue
Subdivision	South Parkdale
City	Toronto (south Parkdale)
Province	Ontario
Postal Code	M6K2E9

## Amenities

Features	Lane, Carpet Free
Parking Spaces	4
Parking	No Garage

## Interior

Appliances	Water Heater
Heating	Natural gas Radiant heat
Cooling	Central air conditioning
Fireplace	Yes
# of Stories	3
Basement	Apartment in basement

## Exterior

Exterior	Brick, Vinyl siding
Lot Description	27 x 125 FT
Foundation	Poured Concrete

## Listing Details

Listing Office	ROYAL LEPAGE REAL ESTATE SERVICES LTD.
----------------	--



The trademarks MLS®, Multiple Listing Service® and the associated logos are owned by The Canadian Real Estate Association (CREA) and identify the quality of services provided by real estate professionals who are members of CREA. REALTOR®. Member of CREA and more.

Listing information last updated on October 14th, 2025 at 3:01pm EDT