

# \$3,599,000 - 8546 Appleby Line, Milton

MLS® #W12151383

**\$3,599,000**

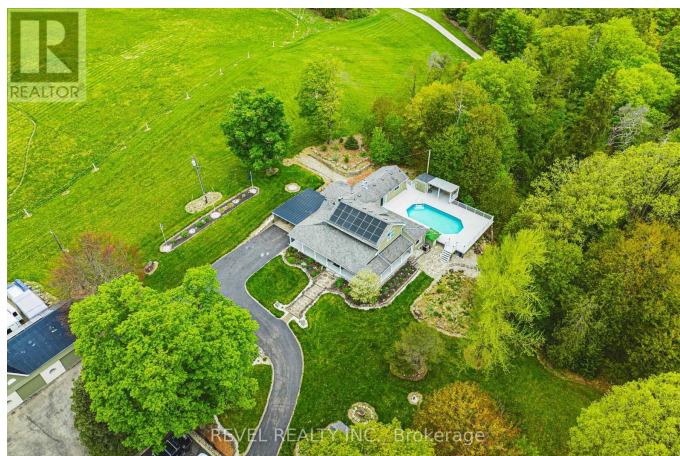
4 Bedroom, 3.00 Bathroom,  
Single Family on 0.00 Acres

Rural Milton West, Milton, Ontario

A rare opportunity to own 35 acres of scenic countryside on sought-after Appleby Line. This income-generating hobby farm features Multiple residences including a charming circa 1837 log home, with 4 bedrooms, a wrap around porch, and a pool, a 2-bed cottage overlooking 16 Mile Creek, and 3 mobile homes all with separate septic and parking. A 9-stall horse barn, rolling paddocks, heated 600 sq. ft. workshop, 3-Bay drive shed, and solar panels (approx. \$13,500/yr income). The land is breathtaking rolling fields, mature trees, and a creek winding along the edge. Ideal for multigenerational living, investors, or those seeking a rural lifestyle with supplemental income. Ground source heat, solar pool heating, and proximity to Kelso, Glen Eden & Hilton Falls complete the picture. Just minutes to Milton, Burlington, and 401 access, yet a world away. Truly one of the areas most beautiful and unique properties! (id:6289)

## Essential Information

|            |               |
|------------|---------------|
| Listing #  | W12151383     |
| Price      | \$3,599,000   |
| Bedrooms   | 4             |
| Bathrooms  | 3.00          |
| Half Baths | 1             |
| Acres      | 0.00          |
| Type       | Single Family |
| Sub-Type   | Freehold      |



## Community Information

|             |                   |
|-------------|-------------------|
| Address     | 8546 Appleby Line |
| Subdivision | Rural Milton West |
| City        | Milton            |
| Province    | Ontario           |
| Postal Code | L0P1B0            |

## Amenities

|                |  |
|----------------|--|
| Amenities      | Schools, Ski area  |
| Utilities      | Electricity, Telephone, Electricity Connected  |
| Features       | Wooded area, Irregular lot size, Rolling, Partially cleared, Open space, Level, Hilly, Solar Equipment |
| Parking Spaces | 20   |
| Parking        | Carport, Garage  |
| # of Garages   | 2  |
| View           | View of water, Direct Water View   |
| Is Waterfront  | Yes  |
| Waterfront     | Waterfront   |
| Has Pool       | Yes  |
| Pool           | On Ground Pool   |

## Interior

|                 |                              |
|-----------------|------------------------------|
| Appliances      | Water softener, Water Heater |
| Heating         | Forced air                   |
| Cooling         | Ventilation system           |
| Fireplace       | Yes                          |
| # of Fireplaces | 2                            |
| # of Stories    | 2                            |
| Has Basement    | Yes                          |

## Exterior

|                   |   |
|-------------------|---|
| Exterior          | Wood, Log   |
| Exterior Features | Landscaped  |
| Lot Description   | 140 x 1083 FT ; Irregular: 35 Acres 25 - 50 acres |
| Foundation        | Stone, Concrete                                   |

## Listing Details

|                |                   |
|----------------|-------------------|
| Listing Office | REVEL REALTY INC. |
|----------------|-------------------|



The trademarks MLS®, Multiple Listing Service® and the associated logos are owned by The Canadian Real Estate Association (CREA) and identify the quality of services provided by real estate professionals who are members of CREA. REALTOR®. Member of CREA and more.

Listing information last updated on October 14th, 2025 at 12:16pm EDT