

# \$39,999,999 - 70 Superior Boulevard, Mississauga (gateway)

MLS® #W12190231

**\$39,999,999**

0 Bedroom, 0.00 Bathroom, 10 sqft  
Vacant Land on 435776.00 Acres

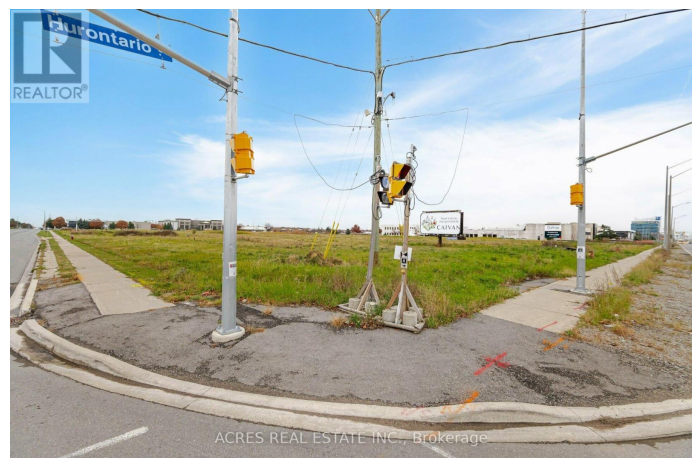
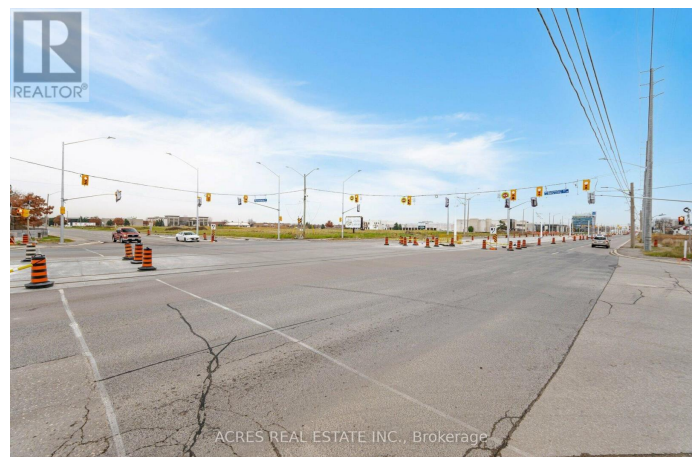
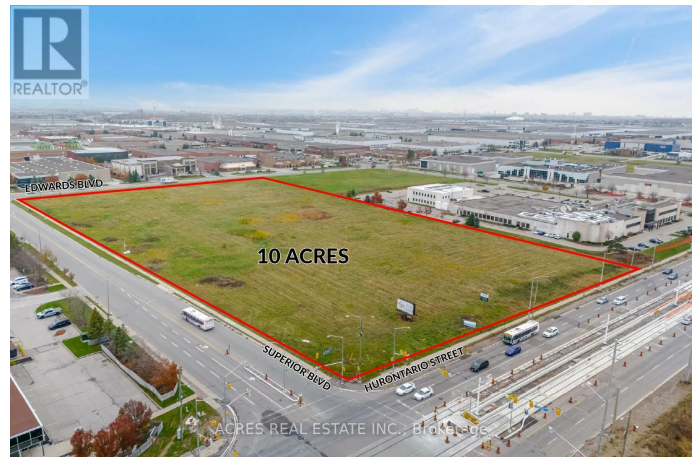
Gateway, Mississauga (gateway), Ontario

Excellent purchase opportunity at Superior/ Hwy 10/ Derry in Mississauga. A Rare Find 10 acres of land Exceptionally positioned in a prime location. Generous split E2 & O3 zoning that permits many uses. Conveniently located in close proximity to various highways 401, 403, 407, 410, 427, Toronto Pearson International Airport and an amenity-rich neighbourhood with immediate access to public transit. Professionally owned and managed. LRT at the doorstep, Excellent Three street exposure. Hurontario (Hwy 10), Superior & Edwards Blvd. Just North of Highway 401 on Hurontario St. Main Street Exposure and Located Within One of Mississauga's Most Desirable Employment Nodes. Ready for Hotels, Convention centre, banquet facility or as you can Imagine. (id:6289)

## Essential Information

Listings #	W12190231
Price	\$39,999,999
Bathrooms	0.00
Square Footage	10
Acres	435,776.00
Type	Vacant Land

## Community Information



Address	70 Superior Boulevard
Subdivision	Gateway
City	Mississauga (gateway)
Province	Ontario
Postal Code	L5T2X9

## Amenities

Amenities	Highway, Public Transit
-----------	-------------------------

## Listing Details

Listing Office	ACRES REAL ESTATE INC.
----------------	------------------------



The trademarks MLS®, Multiple Listing Service® and the associated logos are owned by The Canadian Real Estate Association (CREA) and identify the quality of services provided by real estate professionals who are members of CREA. REALTOR®. Member of CREA and more.

Listing information last updated on October 15th, 2025 at 11:16am EDT