

\$2,350 - 1 - 294 South Kingsway Road, Toronto (high Park-Swansea)

MLS® #W12416404

\$2,350

3 Bedroom, 2.00 Bathroom,
Single Family

High Park-Swansea, Toronto (high Park-Swansea), Ontario

Stylish and spacious lower-level apartment in Toronto's most beloved neighbourhood. Welcome to the heart of Bloor West Village, one of Toronto's most sought-after and consistently top ranked communities to live in. Just a 5 minute walk to Jane Station, this beautifully renovated lower-level suite offers exceptional comfort, privacy and lifestyle convenience in an unbeatable location. Steps from artisanal coffee shops, boutique salons, and popular local favourites like the Cheese Boutique, you'll love the vibrancy of this walkable neighbourhood. The Old Mill Spa, Humber River trails, and High Park are all within easy reach, offering nature and relaxation moments away from your door. Inside, this unit has been completely redone in 2020 and offers radiant gas-heated floors throughout - perfect for cozy winters - along with a separate entrance, separate thermostat and individually metered hydro and gas, giving you full control over your comfort and utility costs. Large windows bring in natural light, and the modern kitchen and updated bathrooms provide a fresh, contemporary feel. With ensuite laundry and ample space for up to three home office setups, this unit is ideal for professionals or couples working remotely. Located within the catchment of Swansea Junior and Senior Public School, one of Ontario's top-rated schools, this home also



makes an excellent choice for families looking to set roots in a well-rounded community-driven area. Whether you're looking for a stylish home base, a quiet retreat, or a lifestyle surrounded by charm, green space, and convenience - this is the one!. One parking spot is available at an additional cost of \$150 per month. (id:6289)

Essential Information

Listing #	W12416404
Price	\$2,350
Bedrooms	3
Bathrooms	2.00
Type	Single Family
Sub-Type	Freehold

Community Information

Address	1 - 294 South Kingsway Road
Subdivision	High Park-Swansea
City	Toronto (high Park-Swansea)
Province	Ontario
Postal Code	M6S3T9

Amenities

Amenities	Separate Electricity Meters, Separate Heating Controls
Features	Carpet Free
Parking Spaces	1
Parking	Attached Garage, No Garage
# of Garages	1

Interior

Heating	Natural gas Heat Pump
Cooling	Central air conditioning
# of Stories	2

Exterior

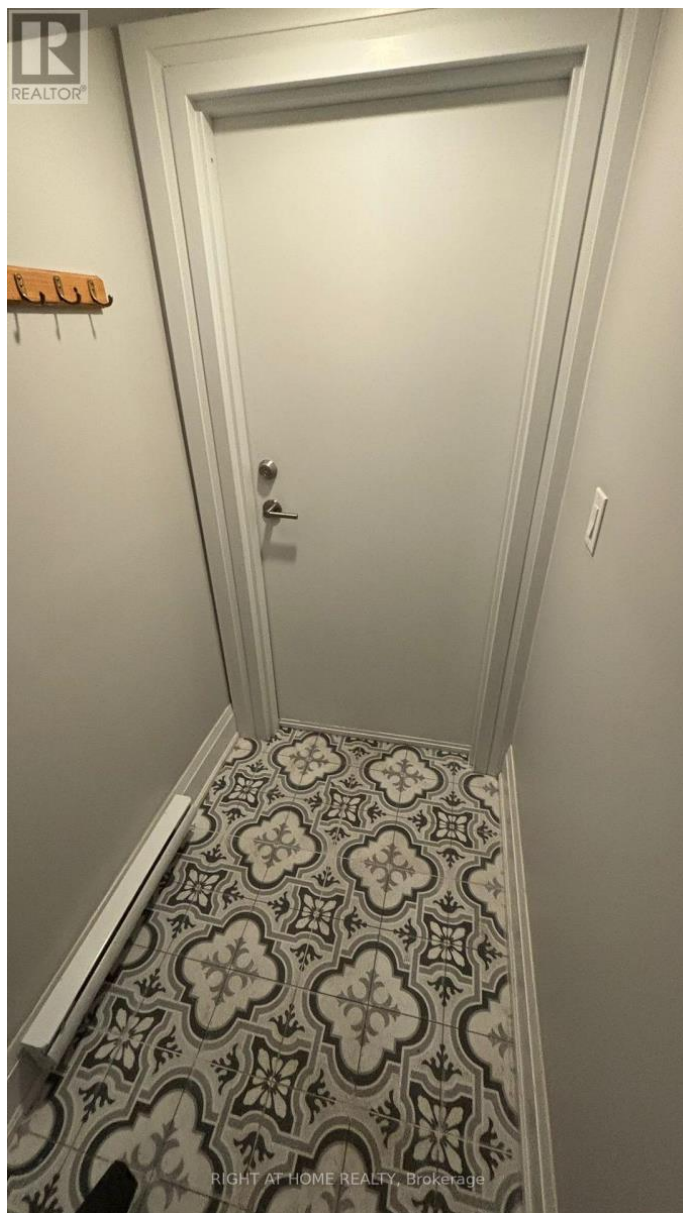
Exterior	Brick
Foundation	Block



Listing Details

Listing Office

RIGHT AT HOME REALTY



The trademarks MLS®, Multiple Listing Service® and the associated logos are owned by The Canadian Real Estate Association (CREA) and identify the quality of services provided by real estate professionals who are members of CREA. REALTOR®. Member of CREA and more.

Listing information last updated on October 15th, 2025 at 8:31am EDT