

\$2,350 - 702 - 3900 Confederation Parkway, Mississauga (city Centre)

MLS® #W12425153

\$2,350

2 Bedroom, 1.00 Bathroom,
Single Family

City Centre, Mississauga (city Centre), Ontario

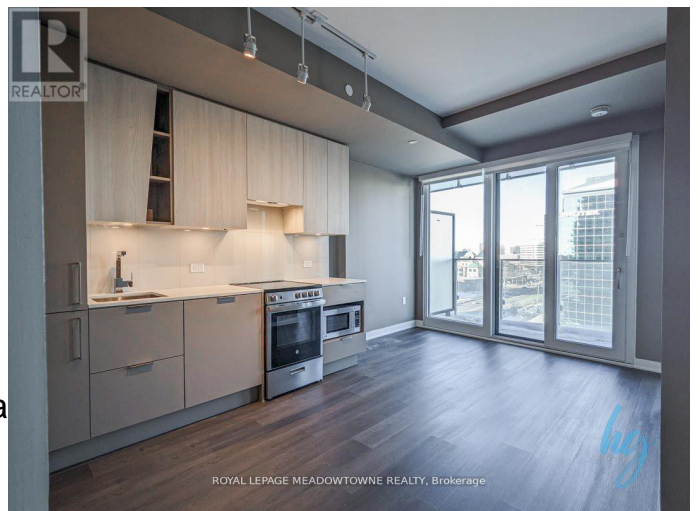
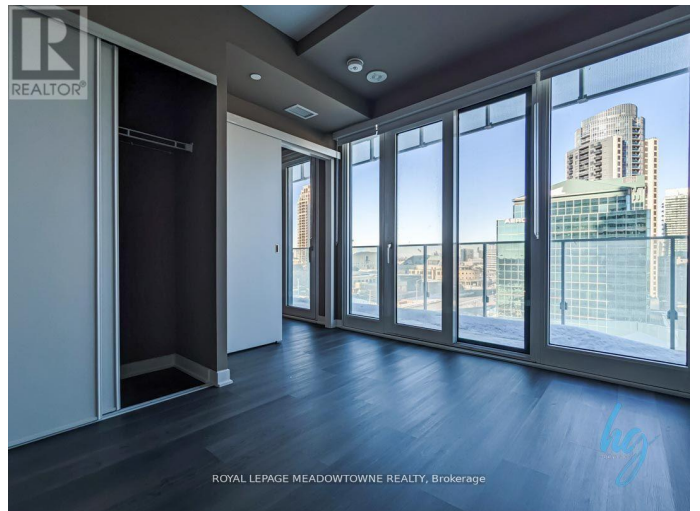
Welcome to M City Condos! This stylish 1-bedroom, 1-bath suite offers 626 sq. ft. of modern living with laminate flooring, soaring 9 ft. ceilings, and floor-to-ceiling windows with bright eastern views. Features include built-in appliances, ensuite laundry, keyless entry, 24/7 concierge service, and Rogers internet. Enjoy top-notch amenities such as a fitness centre, outdoor pool, and party room. Comes with 1 underground parking space. Ideally located just steps from Square One, City Centre, schools, parks, the Art Gallery, City Hall, YMCA, and public transit (id:6289)

Essential Information

Listing #	W12425153
Price	\$2,350
Bedrooms	2
Bathrooms	1.00
Type	Single Family
Sub-Type	Condominium/Strata

Community Information

Address	702 - 3900 Confederation Pa
Subdivision	City Centre
City	Mississauga (city Centre)
Province	Ontario
Postal Code	L5B0M3



Amenities

Amenities	Hospital, Park, Public Transit, Schools, Security/Concierge, Party Room, Visitor Parking, Storage - Locker
Features	Balcony
Parking Spaces	1
Parking	Garage, Underground
# of Garages	1

Interior

Heating	Natural gas Forced air
Cooling	Central air conditioning

Exterior

Exterior	Concrete
----------	----------

Listing Details

Listing Office	ROYAL LEPAGE MEADOWTOWNE REALTY
----------------	---------------------------------



The trademarks MLS®, Multiple Listing Service® and the associated logos are owned by The Canadian Real Estate Association (CREA) and identify the quality of services provided by real estate professionals who are members of CREA. REALTOR®. Member of CREA and more.

Listing information last updated on October 15th, 2025 at 1:16pm EDT