

\$ - 75 City View Drive, Toronto (west Humber-Clairville)

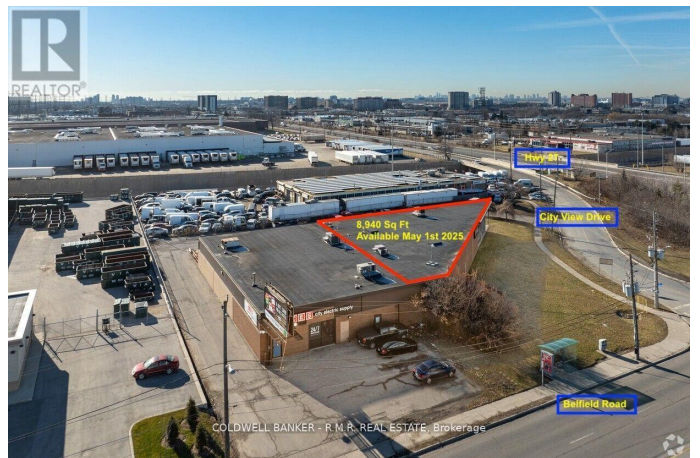
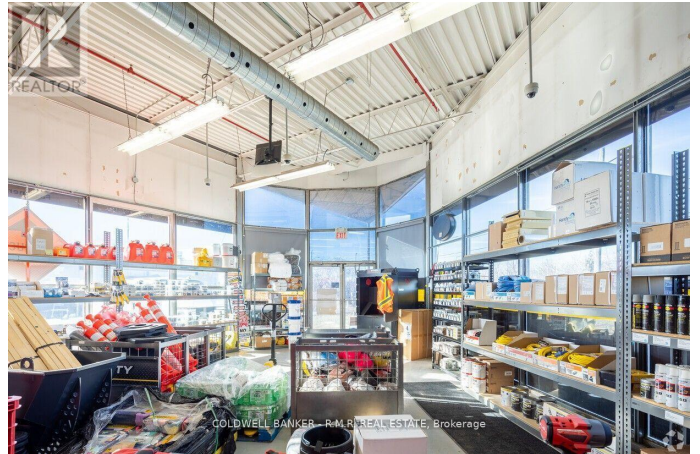
MLS® #W12434687

\$

0 Bedroom, 0.00 Bathroom, 8,940 sqft
Industrial on 0.00 Acres

West Humber-Clairville, Toronto (west Humber-Clairville), Ontario

An outstanding location with visibility on Hwy 27 at Belfield Rd, great for Brand promotion. This property has abundant parking for this 8,940 Sq Ft unit in this 2 unit building. One large drive in door, and a retail style glass store front. Currently used as a contractors supply business, selling tools and equipment. High visibility in a building with highly coveted zoning permitting a wide range of uses. This unit is available May 1st, 2025. (id:6289)



Essential Information

Listing #	W12434687
Bathrooms	0.00
Square Footage	8,940
Acres	0.00
Type	Industrial

Community Information

Address	75 City View Drive
Subdivision	West Humber-Clairville
City	Toronto (west Humber-Clairville)
Province	Ontario
Postal Code	M9W5A5

Amenities

Features	Irregular lot size
----------	--------------------

Interior



Heating Natural gas Forced air
Cooling Fully air conditioned

Exterior

Lot Description 333.34 x 319.69 FT ; Irregular; Pie Shaped

Listing Details

Listing Office COLDWELL BANKER - R.M.R. REAL ESTATE



The trademarks MLS®, Multiple Listing Service® and the associated logos are owned by The Canadian Real Estate Association (CREA) and identify the quality of services provided by real estate professionals who are members of CREA. REALTOR®. Member of CREA and more.

Listing information last updated on October 28th, 2025 at 10:01am EDT