

# \$399,999 - 613 - 20 Brin Drive, Toronto (edenbridge-Humber Valley)

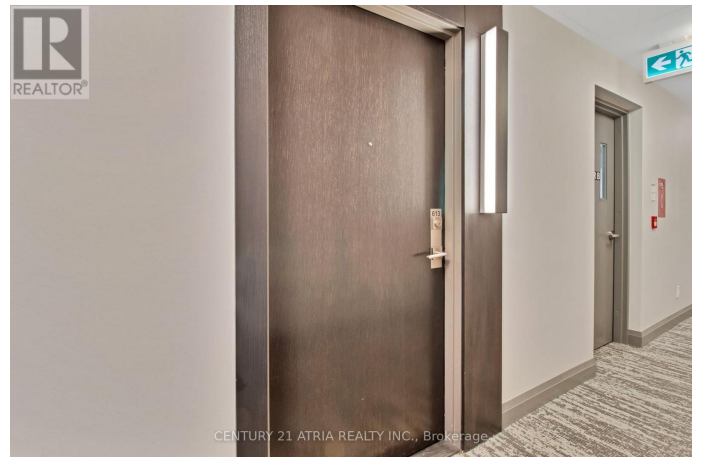
MLS® #W12475376

**\$399,999**

1 Bedroom, 1.00 Bathroom,  
Single Family

Edenbridge-Humber Valley, Toronto  
(edenbridge-Humber Valley), Ontario

Fabulous and Modern Condo at the Highly Coveted Kingsway by the River! This stylish suite combines design, comfort, and convenience in one of Toronto's most sought-after boutique communities-steps from the prestigious Kingsway neighbourhood. Featuring 9-ft smooth ceilings, high-quality flooring, and an open-concept kitchen with quartz counters, under mount sink, backsplash, and stainless steel appliances, this home delivers contemporary elegance throughout. The smart floor plan includes a spacious primary bedroom with a rare walk-in closet and a massive open balcony-perfect for enjoying warm summer nights. Enjoy premium parking on P1, privately positioned with only one neighbour, plus a locker conveniently located on the same level. The building's amazing concierge team and welcoming residents create a true sense of community rarely found in modern condos. Kingsway by the River offers fantastic amenities, including a state-of-the-art gym, rooftop deck with BBQ area, and more. Internet is included, and the low maintenance fees make this the ideal choice for first-time buyers, investors, or snowbirds looking for a lock-and-leave lifestyle. Nestled near transit, shopping, restaurants, parks, and scenic trails leading to the lake, this exclusive building offers the perfect balance of tranquility and accessibility.



Boutique living meets big-city convenience -  
this one truly stands out! (id:6289)

## Essential Information

|           |                    |
|-----------|--------------------|
| Listing # | W12475376          |
| Price     | \$399,999          |
| Bedrooms  | 1                  |
| Bathrooms | 1.00               |
| Type      | Single Family      |
| Sub-Type  | Condominium/Strata |

## Community Information

|             |                                    |
|-------------|------------------------------------|
| Address     | 613 - 20 Brin Drive                |
| Subdivision | Edenbridge-Humber Valley           |
| City        | Toronto (edenbridge-Humber Valley) |
| Province    | Ontario                            |
| Postal Code | M8X0B2                             |

## Amenities

|                |   |
|----------------|---|
| Amenities      | Golf Nearby, Park, Public Transit, Security/Concierge, Exercise Centre, Party Room, Visitor Parking, Storage - Locker |
| Features       | Ravine, Conservation/green belt, Balcony, Carpet Free   |
| Parking Spaces | 1   |
| Parking        | Garage, Underground   |
| # of Garages   | 1   |

## Interior

|            |   |
|------------|---|
| Appliances | Blinds, Dishwasher, Dryer, Microwave, Stove, Washer, Refrigerator |
| Heating    | Natural gas Forced air  |
| Cooling    | Central air conditioning  |

## Exterior

|          |                 |
|----------|-----------------|
| Exterior | Brick, Concrete |
|----------|-----------------|

## Listing Details

|                |                              |
|----------------|------------------------------|
| Listing Office | CENTURY 21 ATRIA REALTY INC. |
|----------------|------------------------------|



The trademarks MLS®, Multiple Listing Service® and the associated logos are owned by The Canadian Real Estate Association (CREA) and identify the quality of services provided by real estate professionals who are members of CREA. REALTOR®. Member of CREA and more.

Listing information last updated on October 31st, 2025 at 7:31pm EDT