

\$ - 1410 Highway 511 Street, Drummond/north Elmsley

MLS® #X10402361

\$

0 Bedroom, 0.00 Bathroom, 6,000 sqft
Office on 0.00 Acres

908 - Drummond N Elmsley (Drummond) Twp,
Drummond/north Elmsley, Ontario

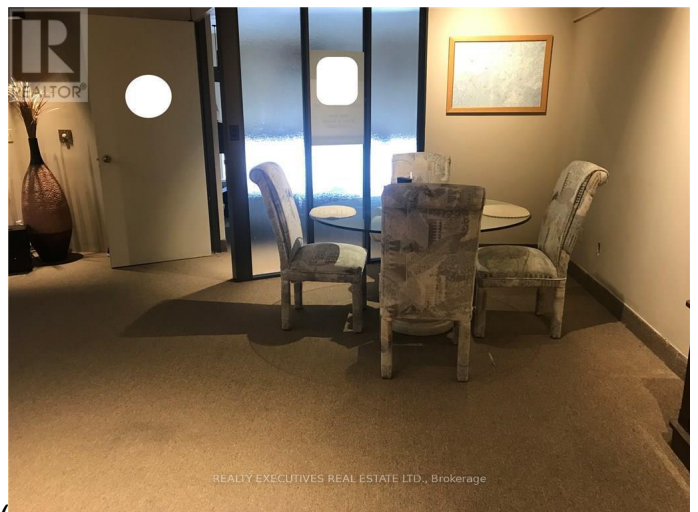
Office space located in the historical building of Balderson Village Cheese (formerly the original Balderson Cheese manufacturing plant) The building presently consists of a retail store - Balderson Village Cheese which brings in locals and tourists year round, a yoga studio, a distribution company and a manufacturing company. The 1200 sq ft office space that is available is located on the second level with access through the Balderson Cheese Store. The space consists a large sitting area, 2 very large offices that are 23 x 22 and 17 x 16 and a separate storage area. This space is perfect for a business like a doctor, dentist, accounting firm, chiropractor, hairdresser or retail client. Tenant pays their own hydro. Lots of parking. (id:6289)

Essential Information

Listing #	X10402361
Bathrooms	0.00
Square Footage	6,000
Acres	0.00
Type	Office

Community Information

Address	1410 Highway 511 Street
Subdivision	908 - Drummond N Elmsley (Drummond) Twp
City	Drummond/north Elmsley



Province Ontario
Postal Code K0G1A0

Interior

Cooling Fully air conditioned

Listing Details

Listing Office REALTY EXECUTIVES REAL ESTATE LTD



The trademarks MLS®, Multiple Listing Service® and the associated logos are owned by The Canadian Real Estate Association (CREA) and identify the quality of services provided by real estate professionals who are members of CREA. REALTOR®. Member of CREA and more.

Listing information last updated on October 12th, 2025 at 9:31pm EDT