

\$399,000 - 7491 Highway 35, Kawartha Lakes (laxton/digby/longford)

MLS® #X11945828

\$399,000

0 Bedroom, 0.00 Bathroom, 1,100 sqft

Retail on 0.00 Acres

Laxton/Digby/Longford, Kawartha Lakes
(laxton/digby/longford), Ontario

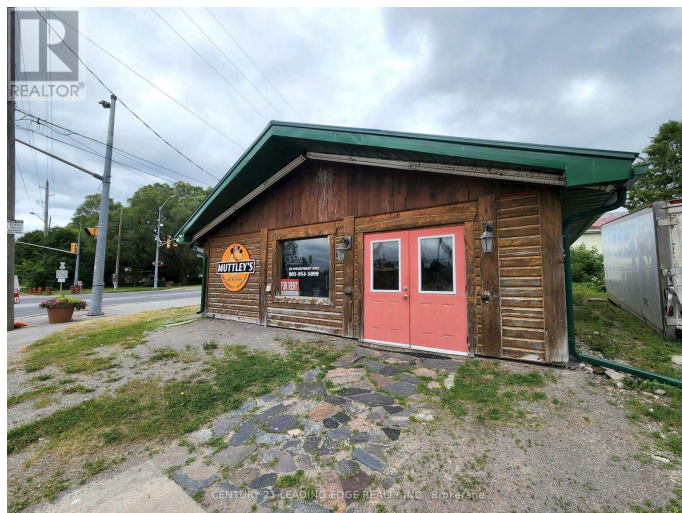
Rare Live/Work Investment Opportunity In The Heart Of Norland! Landmark Commercial Location At The Intersection Of Monck Road And Highway 35, Across From Gull River! Walking Distance To Shadow Lake! Phenomenal Road Exposure W/ Busy Year-Round Traffic! Ideal For Various Commercial Use W/ A Bachelor Apt! Gateway To The Cottage Country! Lindsay, Bracebridge, Haliburton, Bancroft All Approx. 1 Hr Away Or Less! Street Parking Available W/ Ample Public Parking Down The Street.
(id:6289)

Essential Information

Listing #	X11945828
Price	\$399,000
Bathrooms	0.00
Square Footage	1,100
Acres	0.00
Type	Retail

Community Information

Address	7491 Highway 35
Subdivision	Laxton/Digby/Longford
City	Kawartha Lakes (laxton/digby/longford)
Province	Ontario



Postal Code K0M2L0

Exterior

Lot Description 57.2 x 84.12 FT ; 49.49' X 101.17' X 84.12' X 57.20'

Listing Details

Listing Office CENTURY 21 LEADING EDGE REALTY INC.



The trademarks MLS®, Multiple Listing Service® and the associated logos are owned by The Canadian Real Estate Association (CREA) and identify the quality of services provided by real estate professionals who are members of CREA. REALTOR®. Member of CREA and more.

Listing information last updated on October 12th, 2025 at 2:16am EDT