

\$599,900 - 7719 Highway 42, Rideau Lakes

MLS® #X11996764

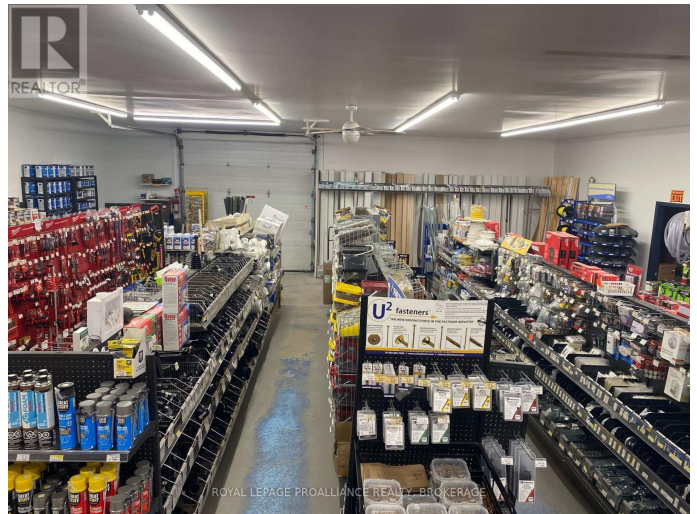
\$599,900

0 Bedroom, 0.00 Bathroom, 16,144 sqft

Retail on 0.00 Acres

817 - Rideau Lakes (South Crosby) Twp,
Rideau Lakes, Ontario

Prime commercial property, Retail store with offices, dome, and circa 1850 building that was once used as the local general store and residence. Rental income could come from the store and dome while you restore the circa 1850 dream home, or simply buy as an investment property. This parcel is centrally located in the heart of the Rideau Lakes tourist region at the busiest intersection in the area. It has great visual lines of sight from both hwy 15 and 42. It is only 30 minutes to Kingston, Gananoque or Brockville. 15 minutes to Westport or Smiths Falls. The Ministry of Transportation is planning on making a circle at this intersection in 2025. (id:6289)



Essential Information

Listing #	X11996764
Price	\$599,900
Bathrooms	0.00
Square Footage	16,144
Acres	0.00
Type	Retail

Community Information

Address	7719 Highway 42
Subdivision	817 - Rideau Lakes (South Crosby) Twp
City	Rideau Lakes
Province	Ontario

Postal Code K0G1E0

Interior

Cooling Partially air conditioned

Exterior

Lot Description Bldg=171.88 x 284.69 FT

Listing Details

Listing Office ROYAL LEPAGE PROALLIANCE REALTY, BROKERAGE



The trademarks MLS®, Multiple Listing Service® and the associated logos are owned by The Canadian Real Estate Association (CREA) and identify the quality of services provided by real estate professionals who are members of CREA. REALTOR®. Member of CREA and more.

Listing information last updated on October 13th, 2025 at 5:46am EDT