

\$1,675,000 - 63 Maple Drive, Perry

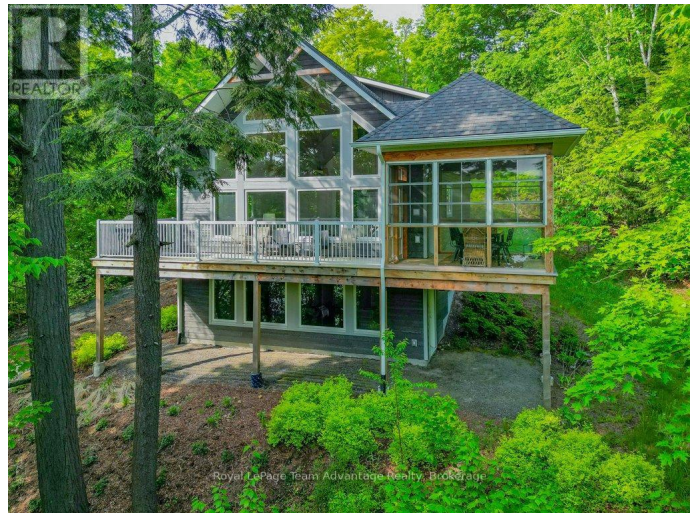
MLS® #X12023125

\$1,675,000

3 Bedroom, 3.00 Bathroom,
Single Family on 0.00 Acres

Perry, Perry, Ontario

Stunning Linwood Custom Home - Turnkey & fully finished. Welcome to this exceptional lakefront cottage/home. This beautifully designed Linwood Custom home offers an unparalleled living experience with sweeping elevated views of Bay Lake. Set on a generous 3/4 acre lot with 110 feet of pristine frontage, this property is a true oasis. Impeccably furnished and professionally decorated, this home is move-in ready - everything you see comes with this amazing package. Enjoy the serene ambiance of the screened-in porch, perfect for relaxation or entertaining while taking in the breathtaking lakefront views. The home also features a convenient lower level walkout providing easy access to the outdoors and additional living space. Inside you'll find 3 spacious bedrooms and 3 well-appointed bathrooms offering ample room for family and guests. Whether you're seeking a year-round retreat or a luxurious weekend getaway this turnkey property offers it all. Boating, swimming and shopping. Equipped with a whole home generator, forced air propane furnace and air conditioning this property ensures comfort and peace of mind year-round. Just 20 Minutes from Huntsville. Don't miss the opportunity to own this one-of-a-kind gem on Bay Lake - your perfect home awaits. (id:6289)



Essential Information

Listing #	X12023125
Price	\$1,675,000
Bedrooms	3
Bathrooms	3.00
Acres	0.00
Type	Single Family
Sub-Type	Freehold

Community Information

Address	63 Maple Drive
Subdivision	Perry
City	Perry
Province	Ontario
Postal Code	P1H2J8

Amenities

Amenities	Fireplace(s), Separate Heating Controls
Utilities	Electricity, Wireless, Electricity Connected
Features	Hillside, Wooded area, Sump Pump
Parking Spaces	6
Parking	No Garage
View	Lake view, Direct Water View
Is Waterfront	Yes
Waterfront	Waterfront

Interior

Appliances	Water Heater, Water purifier, Water softener, Water Treatment, All, Furniture
Heating	Propane Forced air
Cooling	Central air conditioning, Ventilation system
Fireplace	Yes
# of Fireplaces	1
# of Stories	2
Has Basement	Yes
Basement	Walk out, Walk-up

Exterior

Exterior	Hardboard
Lot Description	106 x 345.6 FT

Foundation Concrete, Poured Concrete

Listing Details

Listing Office Royal LePage Team Advantage Realty



The trademarks MLS®, Multiple Listing Service® and the associated logos are owned by The Canadian Real Estate Association (CREA) and identify the quality of services provided by real estate professionals who are members of CREA. REALTOR®. Member of CREA and more.

Listing information last updated on October 12th, 2025 at 5:46pm EDT