

\$1,260,000 - 389 Dufferin Avenue, London East (east F)

MLS® #X12065089

\$1,260,000

6 Bedroom, 4.00 Bathroom,
Multi-family on 0.00 Acres

East F, London East (east F), Ontario

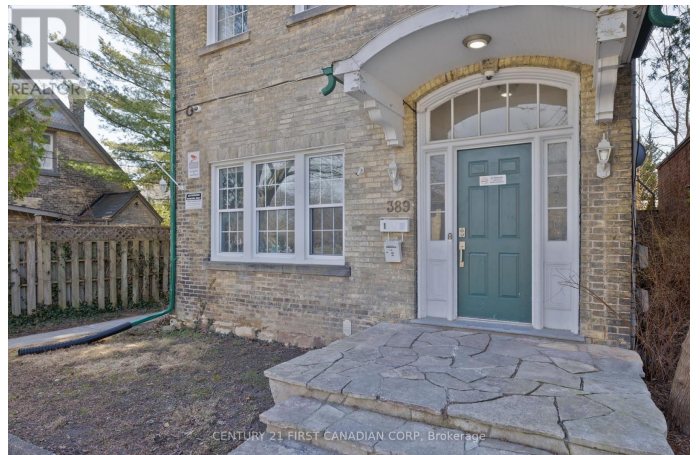
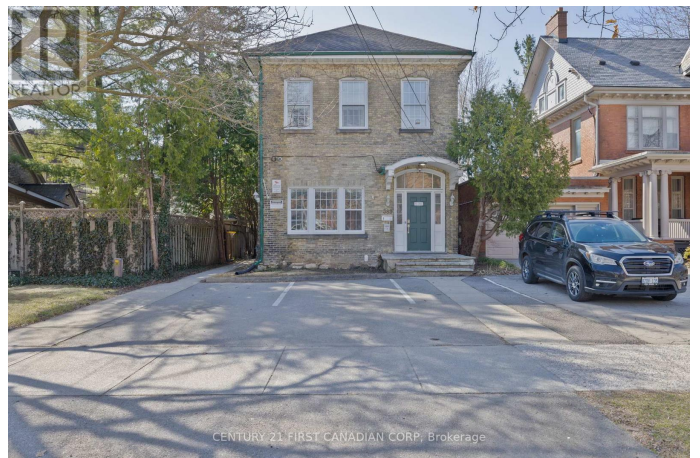
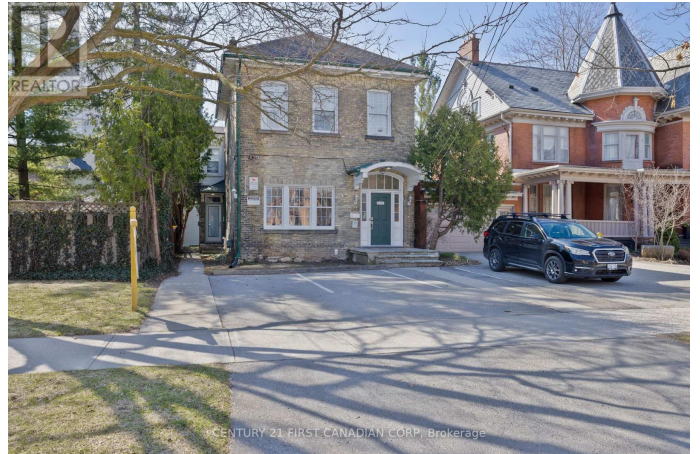
Attention investors! Welcome to 389 Dufferin Ave. This four-plex has 6 bedrooms, 4 kitchens, and 4 bathrooms. Situated in the Woodbridge Heritage district in downtown London, and close to Woodfield French Immersion Public School, Catholic Central High School & Fred Astaire Dance Studio London. 5 minute drive to Covent Garden Market, and 3 minutes to Victoria Park and Richmond Row. Currently 3 out of 4 units are rented with the 4th vacant. Generates annual income of \$75,000 gross. Features automatic evening lighting , security cameras, 3 parking spaces, bus stop conveniently directly in-front of the property, electronic coded door locks for each unit, 3 out of 4 units have been upgraded, storage room at rear of property, and individual electrical meters per unit. Don't miss this unique opportunity! (id:6289)

Essential Information

Listing #	X12065089
Price	\$1,260,000
Bedrooms	6
Bathrooms	4.00
Acres	0.00
Type	Multi-family

Community Information

Address	389 Dufferin Avenue
Subdivision	East F



City	London East (east F)
Province	Ontario
Postal Code	N6B1Z5

Amenities

Amenities	Separate Electricity Meters
Parking Spaces	3
Parking	No Garage

Interior

Appliances	All, Furniture
Heating	Natural gas Forced air
# of Stories	2
Has Basement	Yes

Exterior

Exterior	Brick
Lot Description	33 x 100 FT
Foundation	Brick

Listing Details

Listing Office	CENTURY 21 FIRST CANADIAN CORP
----------------	--------------------------------



The trademarks MLS®, Multiple Listing Service® and the associated logos are owned by The Canadian Real Estate Association (CREA) and identify the quality of services provided by real estate professionals who are members of CREA. REALTOR®. Member of CREA and more.

Listing information last updated on October 15th, 2025 at 2:46am EDT