

\$899,999 - 18574 Erie Shore Drive, Chatham-Kent (blenheim)

MLS® #X12088993

\$899,999

3 Bedroom, 2.00 Bathroom,
Single Family on 0.00 Acres

Blenheim, Chatham-Kent (blenheim), Ontario

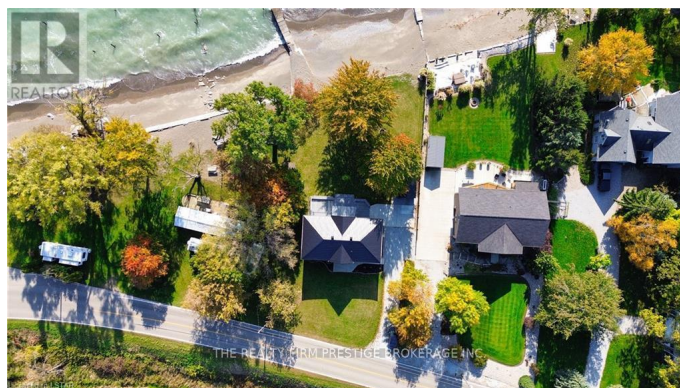
Paradise! Have you been looking for a little slice of heaven on the water in southern Ontario? A place where you can walk out of your back door and into the shore in less than 30 seconds? A place where you can watch the sun rise from your breakfast table while enjoying your morning coffee? Well this is it! This over 2300 sq ft, 3 large bedrooms, 2 full bathroom home is oozing charm and is in one of Ontario's best waterfront locations. Just an 8 minute drive to Erieau, 10 minutes to Blenheim and on route to some of the best wineries Ontario has to offer, 18574 Erie Shores Dr has all amenities within minutes. The perfect mix of cottage getaway and dream home, you will be in awe at what this home has to offer. (id:6289)

Essential Information

Listing #	X12088993
Price	\$899,999
Bedrooms	3
Bathrooms	2.00
Acres	0.00
Type	Single Family
Sub-Type	Freehold

Community Information

Address 18574 Erie Shore Drive



Subdivision	Blenheim
City	Chatham-Kent (blenheim)
Province	Ontario
Postal Code	N0L1A0

Amenities

Amenities	Beach, Marina, Park, Place of Worship, Schools
Utilities	Electricity
Features	Flat site
Parking Spaces	4
Parking	No Garage
View	Direct Water View
Is Waterfront	Yes
Waterfront	Waterfront

Interior

Appliances	Water Heater, Dryer, Furniture, Stove, Washer, Refrigerator
Heating	Natural gas Forced air
Cooling	Central air conditioning
# of Stories	2
Has Basement	Yes

Exterior

Exterior	Stone, Vinyl siding
Exterior Features	Landscaped
Lot Description	96.4 x 204.5 FT under 1/2 acre
Foundation	Concrete

Listing Details

Listing Office THE REALTY FIRM PRESTIGE BROKERAGE INC.



The trademarks MLS®, Multiple Listing Service® and the associated logos are owned by The Canadian Real Estate Association (CREA) and identify the quality of services provided by real estate professionals who are members of CREA. REALTOR®. Member of CREA and more.

Listing information last updated on October 14th, 2025 at 1:31am EDT