

# \$1,699,900 - 182 Charlore Park Drive, Kawartha Lakes (omemee)

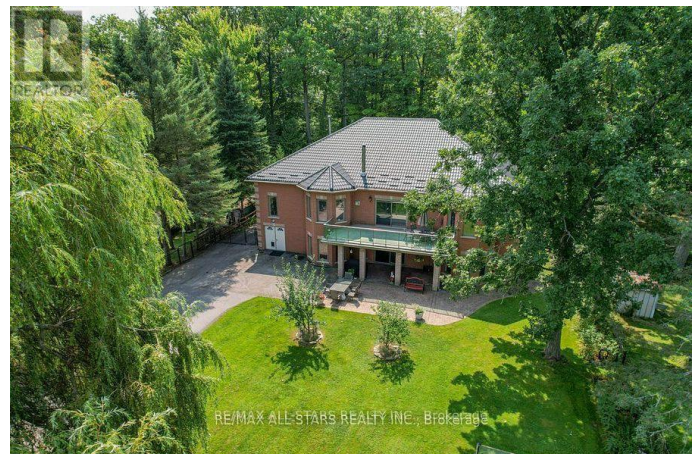
MLS® #X12100822

**\$1,699,900**

6 Bedroom, 3.00 Bathroom,  
Single Family on 0.00 Acres

Omemee, Kawartha Lakes (omemee), Ontario

25% down, vendor take back mortgage. A Nature Lovers Paradise! This 4-season waterfront home or cottage offers 100' of waterfront on Pigeon Lake that leads to all the Trent System has to offer. Step inside to discover 5000 sq ft of living space with a bright interior and 10' high ceilings. Large principal rooms, 4 bedrooms, 2 bathrooms, main floor laundry, dining room, kitchen and living room that leads to your upper deck facing the lake. The walkout basement includes 9' ceilings with a massive entertaining space, wet bar, wood stove, 2 bedrooms and bathroom, that could be easily converted to an in-law suite if desired. This space is ideal and versatile for hosting and entertaining family and friends. The property boasts modern conveniences including a life time metal roof, standby generator, two-car garage with bonus shop below, 2 paved drives for up to 15 car parking including RV parking if needed. A newer metal gazebo sitting on stamped concrete near the dock makes it easy to enjoy all activities Pigeon Lake has to offer. (id:6289)



## Essential Information

Listing #	X12100822
Price	\$1,699,900
Bedrooms	6
Bathrooms	3.00

Acres	0.00
Type	Single Family
Sub-Type	Freehold
Style	Bungalow

### Community Information

Address	182 Charlore Park Drive
Subdivision	Omemee
City	Kawartha Lakes (omemee)
Province	Ontario
Postal Code	K0L2W0

### Amenities

Utilities	Natural Gas Available, Electricity Connected
Parking Spaces	19
Parking	Attached Garage, Garage
# of Garages	2
View	Direct Water View
Is Waterfront	Yes
Waterfront	Waterfront on canal

### Interior

Appliances	Water Heater, Central Vacuum, Dryer, Alarm System, Stove, Washer, Refrigerator
Heating	Natural gas Forced air
Cooling	Central air conditioning
Fireplace	Yes
# of Stories	1
Has Basement	Yes
Basement	Walk out

### Exterior

Exterior	Brick
Lot Description	98.9 x 232.5 FT ; 261.50' x 98.94' x 232.46' x 103.6 1/2 - 1.99 acres
Foundation	Poured Concrete

### Listing Details

Listing Office	RE/MAX ALL-STARS REALTY INC.
----------------	------------------------------



The trademarks MLS®, Multiple Listing Service® and the associated logos are owned by The Canadian Real Estate Association (CREA) and identify the quality of services provided by real estate professionals who are members of CREA. REALTOR®. Member of CREA and more.

Listing information last updated on October 13th, 2025 at 7:01pm EDT