

\$249,900 - Lot B Kehoe Lane, Tweed (elzevir (twp))

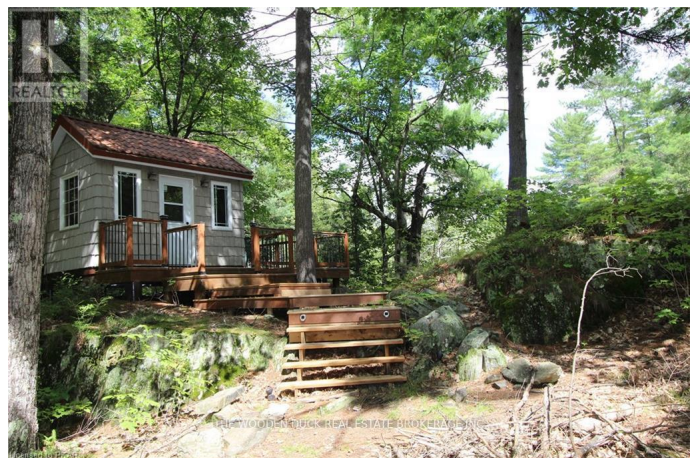
MLS® #X12107378

\$249,900

2 Bedroom, 0.00 Bathroom,
Single Family on 0.00 Acres

Elzevir (Twp), Tweed (elzevir (twp)), Ontario

Riverfront Nature Retreat: This rare 2.6 acre property is one of the most surprisingly private and pleasing listings we have had the opportunity to present. Getting there requires a short boat ride (from your own deeded mainland parking and launch). Once there you find you are 'a world away' comfortably surrounded by quietude & mature upland forest (and good cell reception). This is off-grid 'glamping' at its best with a tastefully decorated rustic main cottage; a sleep bunkie over-looking the Moira/Black River; and a "spa-bunkie" with propane shower. Property has no hydro-AC /lighting is powered by an expandable solar system. Property has no plumbing-but a privy with a view. Turn-key, fully furnished with new dock. Electric pontoon river-boat can be included. "Boat Access Only. You cannot Get There by Car." (id:6289)



Essential Information

| | |
|-----------|---------------|
| Listing # | X12107378 |
| Price | \$249,900 |
| Bedrooms | 2 |
| Bathrooms | 0.00 |
| Acres | 0.00 |
| Type | Single Family |
| Sub-Type | Freehold |
| Style | Bungalow |

Community Information

| | |
|-------------|-----------------------|
| Address | Lot B Kehoe Lane |
| Subdivision | Elzevir (Twp) |
| City | Tweed (elzevir (twp)) |
| Province | Ontario |
| Postal Code | K0K3J0 |

Amenities

| | |
|---------------|--|
| Amenities | Fireplace(s) |
| Features | Wooded area, Irregular lot size, Rocky, Sloping, Solar Equipment |
| Parking | Detached Garage, Garage |
| # of Garages | 2 |
| View | River view, Direct Water View |
| Is Waterfront | Yes |
| Waterfront | Island |

Interior

| | |
|-----------------|------------|
| Heating | Wood Other |
| Fireplace | Yes |
| # of Fireplaces | 1 |
| # of Stories | 1 |

Exterior

| | |
|-----------------|-----------------------------|
| Exterior | Log, Wood |
| Lot Description | 280 x 414 FT 2 - 4.99 acres |
| Foundation | Wood/Piers |

Listing Details

| | |
|----------------|--|
| Listing Office | THE WOODEN DUCK REAL ESTATE BROKERAGE INC. |
|----------------|--|



The trademarks MLS®, Multiple Listing Service® and the associated logos are owned by The Canadian Real Estate Association (CREA) and identify the quality of services provided by real estate professionals who are members of CREA. REALTOR®. Member of CREA and more.

Listing information last updated on October 13th, 2025 at 2:16pm EDT