

# \$699,000 - 24 Islandview Drive, South Bruce Peninsula

MLS® #X12139984

**\$699,000**

4 Bedroom, 2.00 Bathroom,  
Single Family on 0.00 Acres

South Bruce Peninsula, South Bruce  
Peninsula, Ontario

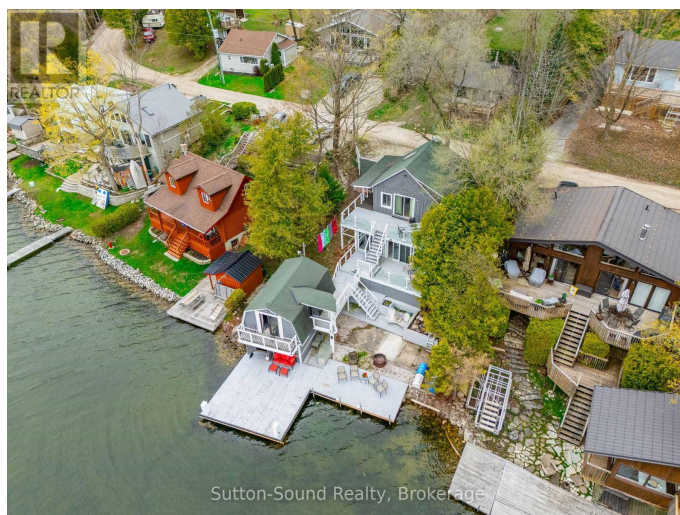
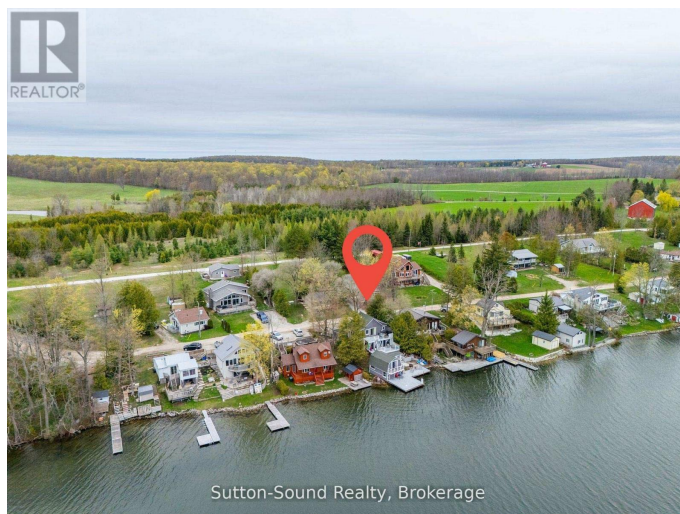
Welcome to Chesley Lake! This fabulous winterized cottage has it all - TWO separate units, each complete with kitchen, full bathroom, sleeping quarters, and open concept living area with patio door walkout to decks. The 14.5' x 20.5' boathouse upper level has spacious living/sleeping area, the lower level with workshop and storage. From the moment you arrive at the cottage, the waterview is spectacular. Chesley Lake is ideal for boating, waterskiing, fishing and more. In the winter season, enjoy snowshoeing, xc skiing, ice fishing, and snowmobiling. (id:6289)

## Essential Information

Listings #	X12139984
Price	\$699,000
Bedrooms	4
Bathrooms	2.00
Acres	0.00
Type	Single Family
Sub-Type	Freehold
Style	Bungalow

## Community Information

Address	24 Islandview Drive
Subdivision	South Bruce Peninsula
City	South Bruce Peninsula



Province	Ontario
Postal Code	N0H1A0

### Amenities

Features	Carpet Free
Parking Spaces	3
Parking	No Garage
View	View of water, Direct Water View
Is Waterfront	Yes
Waterfront	Waterfront

### Interior

Appliances	Dryer, Furniture, Two stoves, Washer, Two Refrigerators
Heating	Natural gas Other
Cooling	Window air conditioner
Fireplace	Yes
# of Stories	1
Has Basement	Yes
Basement	Walk out

### Exterior

Exterior	Wood
Lot Description	60 x 83 FT
Foundation	Block

### Listing Details

Listing Office	Sutton-Sound Realty
----------------	---------------------



The trademarks MLS®, Multiple Listing Service® and the associated logos are owned by The Canadian Real Estate Association (CREA) and identify the quality of services provided by real estate professionals who are members of CREA. REALTOR®. Member of CREA and more.

Listing information last updated on October 14th, 2025 at 4:16am EDT