

\$2,495,000 - 20 Everett Road, South Bruce Peninsula

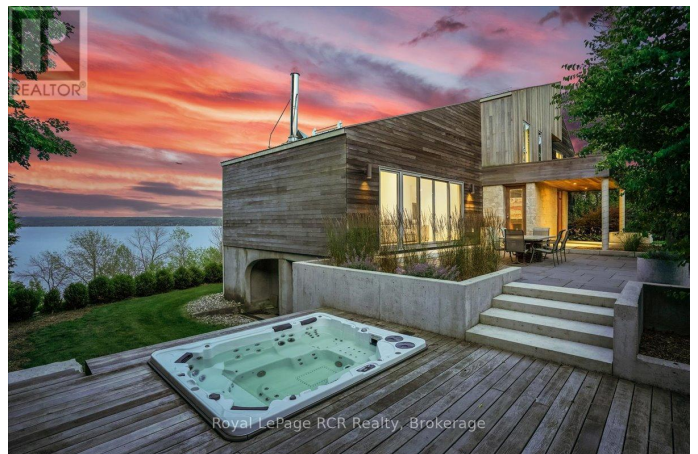
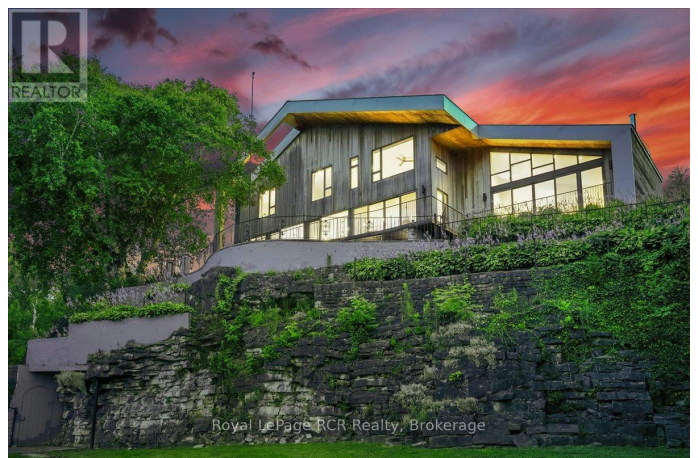
MLS® #X12159998

\$2,495,000

6 Bedroom, 5.00 Bathroom,
Single Family on 0.00 Acres

South Bruce Peninsula, South Bruce
Peninsula, Ontario

Welcome to this breathtaking, luxury estate nestled on the shores of Georgian Bay. With jaw-dropping panoramic views and light pouring in from every angle, this modern masterpiece feels like a private retreat with all the comforts of home, and then some. Floor-to-ceiling windows run along the kitchen and dining room, drawing in the natural beauty outside and filling the heart of the home with light. The kitchen is a chef's dream, featuring a 21' island, Miele appliances, a built-in espresso machine, wine fridge, and sleek finishes throughout. It opens directly to the spacious dining area, perfect for hosting long dinners and lively conversation. The living room is a showstopper with its soaring ceiling and cozy wood-burning fireplace, a stunning space to unwind or curl up with a good book as the bay glistens in the background. Each of the 6 bedrooms has been thoughtfully designed to showcase views of the water. The primary suite is a peaceful retreat, complete with its spa-inspired ensuite, and generous walk-in closet. The walk-out lower level is ideal for an in-law suite, extended family, or flexible guest space with income potential. Outside, the 0.7-acre lot has been landscaped to perfection, with lush gardens, mature trees, and multiple outdoor sitting areas made for entertaining. Take in the serenity from the hot tub as you gaze across the bay, or wander down to your dock for a day on the water. Extras include a three-car detached garage,



RV parking with hook-up, and plenty of storage. Located minutes from Bruce Peninsula National Park and the charming shops and restaurants of Wiarton. Whether you're looking for a year-round residence or a luxurious weekend escape, this property offers a lifestyle of peace, beauty, and a whole lot of wow! (id:6289)

Essential Information

Listing #	X12159998
Price	\$2,495,000
Bedrooms	6
Bathrooms	5.00
Half Baths	1
Acres	0.00
Type	Single Family
Sub-Type	Freehold

Community Information

Address	20 Everett Road
Subdivision	South Bruce Peninsula
City	South Bruce Peninsula
Province	Ontario
Postal Code	N0H2T0

Amenities

Amenities	Marina, Fireplace(s)
Features	Cul-de-sac, Lighting, Carpet Free
Parking Spaces	11
Parking	Detached Garage, Garage
# of Garages	2
View	View, View of water, Direct Water View
Is Waterfront	Yes
Waterfront	Waterfront

Interior

Appliances	Hot Tub, Garage door opener remote(s), Oven - Built-In, Range,
------------	--

Garburator, Central Vacuum, Dishwasher, Dryer, Garage door opener, Oven, Stove, Washer, Window Coverings, Wine Fridge, Refrigerator

Heating	Propane Radiant heat
Cooling	Central air conditioning
Fireplace	Yes
# of Stories	2
Has Basement	Yes
Basement	Walk out

Exterior

Exterior	Cedar Siding, Stone
Exterior Features	Landscaped
Lot Description	125.2 x 255.5 FT
Foundation	Poured Concrete

Listing Details

Listing Office Royal LePage RCR Realty



The trademarks MLS®, Multiple Listing Service® and the associated logos are owned by The Canadian Real Estate Association (CREA) and identify the quality of services provided by real estate professionals who are members of CREA. REALTOR®. Member of CREA and more.

Listing information last updated on October 15th, 2025 at 9:01am EDT