

\$3,499,000 - 1046 Lone Wolf Crescent, Dysart Et Al (harburn)

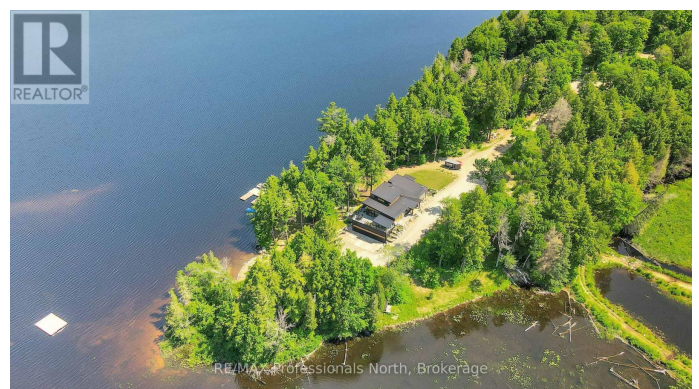
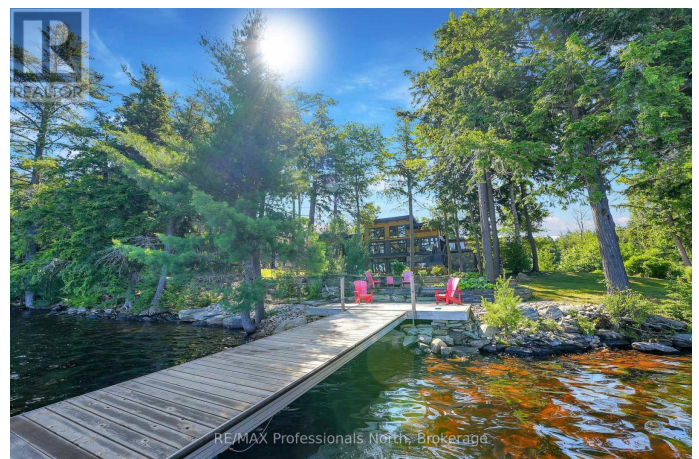
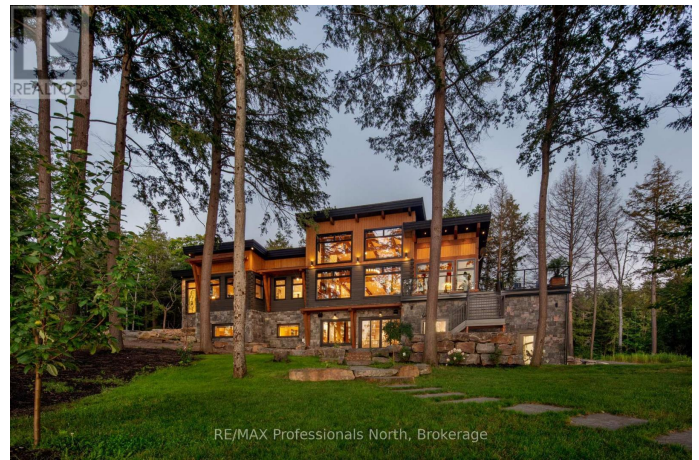
MLS® #X12359362

\$3,499,000

4 Bedroom, 3.00 Bathroom,
Single Family on 0.00 Acres

Harburn, Dysart Et Al (harburn), Ontario

Discover luxury on the shores of Percy Lake in Haliburton's coveted cottage country. This waterfront estate located in a highly desirable new development, optimized for peace and privacy, represents the pinnacle of refined living. Nestled on over 3+ acres of extensive granite landscaped grounds, this Discovery Dream Home offers an extraordinary blend of privacy and recreational possibilities that few properties can match. The property's crown jewel is its expansive Percy Lake frontage, complete with a private dock and dedicated boat launch area. What truly sets it apart is its rare aviation access, featuring a private airplane hangar offering a versatile space attached to the home. Throughout the interior, desirable finishings showcase meticulous attention to detail and quality, with every surface, fixture, and finish carefully selected to create an atmosphere of rustic elegance and comfort. The heart of the home features a gorgeous kitchen designed for entertaining, complimented by a secondary kitchen that's perfect for catering or extended family gatherings. The primary bedroom serves as a private retreat, featuring an amazing ensuite bathroom with captivating lake views where you can wake each morning to the beauty of Percy Lake stretching before you. The fully finished walkout basement expands the living space dramatically, featuring a large rec room, an additional bedroom, plus an office/gym and



plenty of extra storage space. Extremely private, this estate offers a rare opportunity to own a piece of Haliburton's most desirable waterfront while accessing 1200 acres of shared land, complete with trails for endless opportunities to explore untouched nature. This is more than a luxury home; it's a complete lifestyle destination, where every day feels like a vacation. (id:6289)

Essential Information

Listing #	X12359362
Price	\$3,499,000
Bedrooms	4
Bathrooms	3.00
Acres	0.00
Type	Single Family
Sub-Type	Freehold
Style	Raised bungalow

Community Information

Address	1046 Lone Wolf Crescent
Subdivision	Harburn
City	Dysart Et Al (harburn)
Province	Ontario
Postal Code	K0M1S0

Amenities

Amenities	Beach, Park, Ski area, Fireplace(s)
Features	Wooded area, Sloping, Level
Parking Spaces	13
Parking	Attached Garage, Garage
# of Garages	2
View	Lake view, View of water, Direct Water View
Is Waterfront	Yes
Waterfront	Waterfront

Interior

Appliances	Hot Tub
Heating	Propane Radiant heat
Cooling	Central air conditioning
Fireplace	Yes
# of Stories	1
Has Basement	Yes
Basement	Walk out

Exterior

Exterior	Log
Exterior Features	Landscaped
Lot Description	1211.1 x 330.3 FT 2 - 4.99 acres
Foundation	Insulated Concrete Forms

Listing Details

Listing Office RE/MAX Professionals North



The trademarks MLS®, Multiple Listing Service® and the associated logos are owned by The Canadian Real Estate Association (CREA) and identify the quality of services provided by real estate professionals who are members of CREA. REALTOR®. Member of CREA and more.

Listing information last updated on October 15th, 2025 at 2:46am EDT