

\$599,900 - 2828 Con.10 N, Mississippi Mills

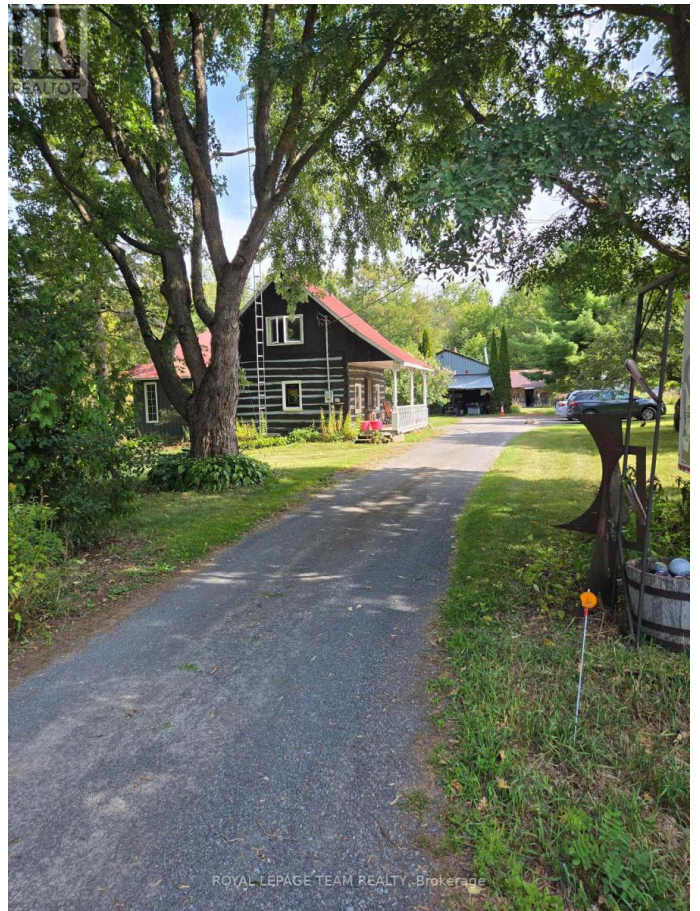
MLS® #X12396707

\$599,900

1 Bedroom, 2.00 Bathroom,
Single Family on 0.00 Acres

918 - Mississippi Mills - Pakenham, Mississippi Mills, Ontario

Charming doesn't begin to describe this property. This one bedroom log home is right out of the pages of a Disney fairytale. Relax on the gingerbread front porch or wander down and put your feet into the shallow portion of Waba Creek or take a dip in the deeper swimming hole. The property extends onto the far side of the creek to ensure your privacy. There's also a screened gazebo for your outdoor enjoyment. Beautifully treed with rolling lawns and rustic outbuildings, there is also a cleared field ideal for livestock. Inside you will find the original building with exposed log walls and open beamed ceiling as well as a modern eat-in kitchen with a dining bay featuring spectacular views of your private paradise. Upstairs the loft style bedroom has plenty of closet space and a 4 pc bath. The basement level is home to a cozy family room with wood stove, and a bright bay window. This level is also home to a 2pc bath, laundry and large storage area. In addition to all this, check out the 28 ft x 30 ft heated workshop. Ideal for the hobbyist, artist or crafts person in the family. Close to the historic village of Pakenham as well as a short drive to the town of Arnprior and about a 15 minute drive to Hwy 417. (id:6289)



Essential Information

Listing # X12396707

Price \$599,900
 Bedrooms 1
 Bathrooms 2.00
 Half Baths 1
 Acres 0.00
 Type Single Family
 Sub-Type Freehold

Community Information

Address 2828 Con.10 N
 Subdivision 918 - Mississippi Mills - Pake
 City Mississippi Mills
 Province Ontario
 Postal Code K0A2X0

Amenities

Utilities Electricity, Electricity Connected
 Features Wooded area, Irregular lot size
 Parking Spaces 8
 Parking Detached Garage, Garage
 # of Garages 2
 Is Waterfront Yes
 Waterfront Waterfront

Interior

Appliances Water Heater, Dryer, Stove, V
 Heating Electric Baseboard heaters
 Cooling None
 Fireplace Yes
 # of Fireplaces 1
 # of Stories 2

Exterior

Exterior Log, Wood
 Exterior Features Landscaped
 Lot Description 839 x 292 FT|5 - 9.99 acres
 Foundation Stone, Concrete

Listing Details





The trademarks MLS®, Multiple Listing Service® and the associated logos are owned by The Canadian Real Estate Association (CREA) and identify the quality of services provided by real estate professionals who are members of CREA. REALTOR®. Member of CREA and more.

Listing information last updated on October 26th, 2025 at 12:46pm EDT