

\$475,000 - 1168 Whitney Road, Perry

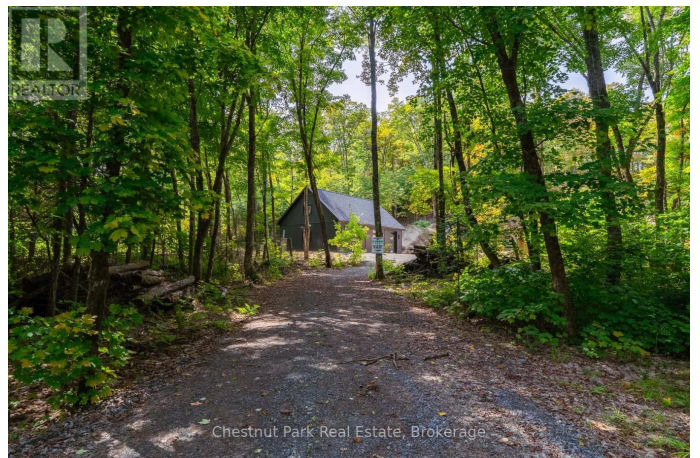
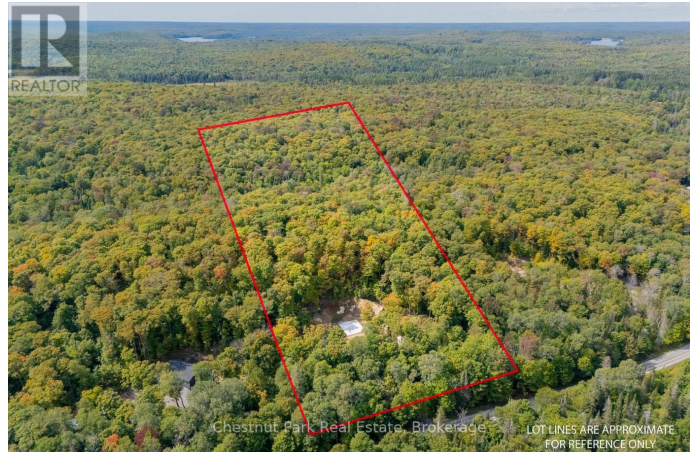
MLS® #X12411391

\$475,000

0 Bedroom, 0.00 Bathroom,
Vacant Land on 0.00 Acres

Perry, Perry, Ontario

This 10.3-acre lot is prepped and ready to build. All the groundwork is done. Stop searching for land and start your project now! Stamped plans for a 2-bed, 3-bath house are included (can be customized to make it your own), so you can get to work immediately. Permit is in hand, pad is prepped, and the slab is ready for your new home. A well and septic system are already installed, and hydro is on-site and connected to a new 28' x 40' three-car garage. The garage, with its storage loft, provides immediate utility and secure storage for your tools and equipment. A separate shed is also on the property, giving you even more space to store building materials and keep the site organized. With 328 feet of road frontage on a year-round municipal road, this lot is mostly level and treed, with predominantly maple and cherry with a ridge near the rear of the lot including a small creek. It's a prime spot that feels secluded and private but is conveniently located on a school bus route and a mere 15 minutes from both Huntsville and Burks Falls. This location is a recreational paradise. You're minutes from public boat launches on Round and Doe Lakes, and snowmobile and ATV trails are right around the corner, connecting you to the region's vast trail network. It's the perfect spot to build your home base for work and play! (id:6289)



Essential Information

Listing #	X12411391
Price	\$475,000
Bathrooms	0.00
Acres	0.00
Type	Vacant Land

Community Information

Address	1168 Whitney Road
Subdivision	Perry
City	Perry
Province	Ontario
Postal Code	P0A1J0

Amenities

Utilities	Electricity
Features	Wooded area, Level
Parking Spaces	9
Parking	Detached Garage, Garage
# of Garages	2

Exterior

Lot Description	328.08 x 1371 FT 10 - 24.99 acres
-----------------	-----------------------------------

Listing Details

Listing Office	Chestnut Park Real Estate
----------------	---------------------------



The trademarks MLS®, Multiple Listing Service® and the associated logos are owned by The Canadian Real Estate Association (CREA) and identify the quality of services provided by real estate professionals who are members of CREA. REALTOR®. Member of CREA and more.

Listing information last updated on October 15th, 2025 at 10:32am EDT