

\$2,400 - 686 Limeridge Road E, Hamilton (lawfield)

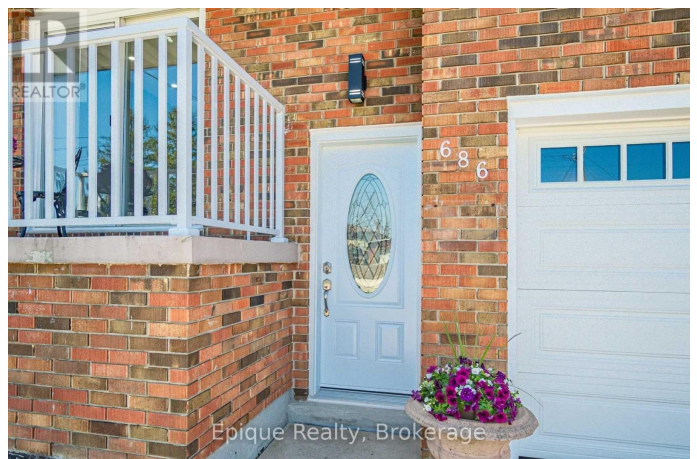
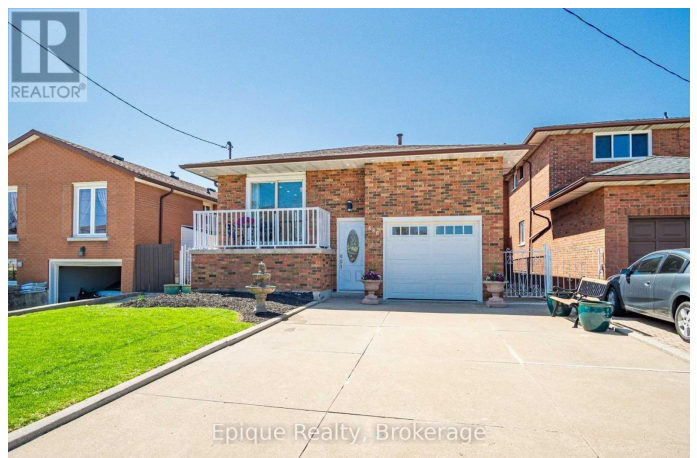
MLS® #X12426265

\$2,400

3 Bedroom, 1.00 Bathroom,
Single Family on 0.00 Acres

Lawfield, Hamilton (lawfield), Ontario

Welcome to this bright and spacious upper-level unit at 686 Limeridge Road East in Hamilton, which offers three well-sized bedrooms and a full bathroom, making it an ideal home for families or professionals. The open-concept kitchen, living, and dining area creates a welcoming flow throughout the space, while the private porch provides the perfect spot to unwind in the evenings. Located in one of Hamilton's most convenient neighbourhoods, the home is only minutes from CF Lime Ridge Mall, offering a wide range of shopping, dining, and services. Public transit is easily accessible with the Lime Ridge Mall bus terminal nearby, ensuring stress-free commuting across the city. For those who drive, the property is close to the Lincoln M. Alexander Parkway, providing quick connections to Highway 403 and beyond. Families will appreciate the proximity to local schools such as Pauline Johnson Elementary and Sherwood Secondary, as well as parks and community amenities. This location truly combines comfort with convenience, offering easy access to everything you need. The unit is well-maintained and ready for occupancy, with landlord requirements including AAA tenants with good credit, a job letter, and references. Don't miss the chance to make this bright and well-located home yours. (id:6289)



Essential Information

Listing #	X12426265
Price	\$2,400
Bedrooms	3
Bathrooms	1.00
Acres	0.00
Type	Single Family
Sub-Type	Freehold
Style	Bungalow

Community Information

Address	686 Limeridge Road E
Subdivision	Lawfield
City	Hamilton (lawfield)
Province	Ontario
Postal Code	L8W1A3

Amenities

Features	Carpet Free
Parking Spaces	1
Parking	Attached Garage, Garage
# of Garages	2

Interior

Appliances	Dishwasher, Dryer, Water Heater, Hood Fan, Stove, Refrigerator
Heating	Natural gas Forced air
Cooling	Central air conditioning
# of Stories	1
Basement	Apartment in basement

Exterior

Exterior	Brick
Lot Description	35 x 102 FT
Foundation	Concrete

Listing Details

Listing Office	Epique Realty
----------------	---------------



The trademarks MLS®, Multiple Listing Service® and the associated logos are owned by The Canadian Real Estate Association (CREA) and identify the quality of services provided by real estate professionals who are members of CREA. REALTOR®. Member of CREA and more.

Listing information last updated on October 15th, 2025 at 3:01pm EDT