

\$2,850 - 16 Goodwillie Drive, Welland (n. Welland)

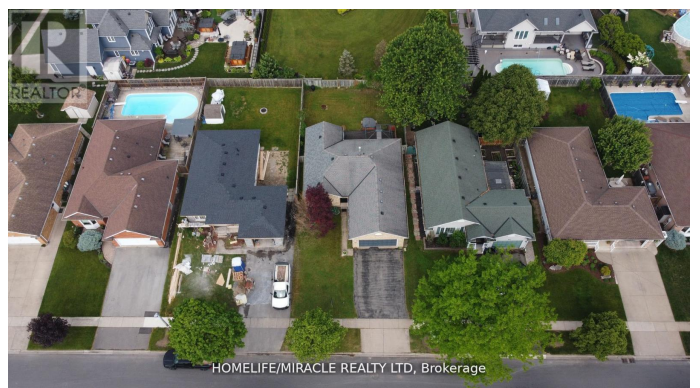
MLS® #X12428465

\$2,850

6 Bedroom, 3.00 Bathroom,
Single Family on 0.00 Acres

767 - N. Welland, Welland (n. Welland),
Ontario

This spacious bungalow avail for lease boasts an amazing main floor Entertainers delight, both in & out doors. Offering an eat-in kitchen with loads of cupboard and counter space, room for a large dining table beside a bay window, walk-out to a deck, in the fully-fenced rear yard that is lined with trumpet vines. Inside off the kitchen through leaded glass french doors is the living room with large bright window and vaulted ceiling. On the main floor are three bedrooms, primary bedroom has a walk-in closet and it's own ensuite 3pc bath. Just off the foyer is the mudroom that is plumbed and wired for laundry, separate entrance to the basement, and also provides access to the two car attached garage that has a side entry door. The lower level contains lots of storage space, laundry, 2 bedrooms, office and a kitchenette, 3pc bathroom, large rec room/den/library, and a cold storage room. (id:6289)



Essential Information

Listing #	X12428465
Price	\$2,850
Bedrooms	6
Bathrooms	3.00
Acres	0.00
Type	Single Family
Sub-Type	Freehold

Style Bungalow

Community Information

Address 16 Goodwillie Drive
Subdivision 767 - N. Welland
City Welland (n. Welland)
Province Ontario
Postal Code L3C7C4

Amenities

Features Sump Pump, In-Law Suite
Parking Spaces 4
Parking Attached Garage, Garage
of Garages 2

Interior

Appliances Water meter
Heating Natural gas Forced air
Cooling Central air conditioning
of Stories 1
Basement Separate entrance, Walk-up

Exterior

Exterior Brick Facing
Lot Description 50.1 x 120.1 FT
Foundation Poured Concrete

Listing Details

Listing Office HOMELIFE/MIRACLE REALTY LTD



The trademarks MLS®, Multiple Listing Service® and the associated logos are owned by The Canadian Real Estate Association (CREA) and identify the quality of services provided by real estate professionals who are members of CREA. REALTOR®. Member of CREA and more.

Listing information last updated on October 29th, 2025 at 4:06am EDT