

# \$2,975,000 - 5 Clemow Avenue, Ottawa

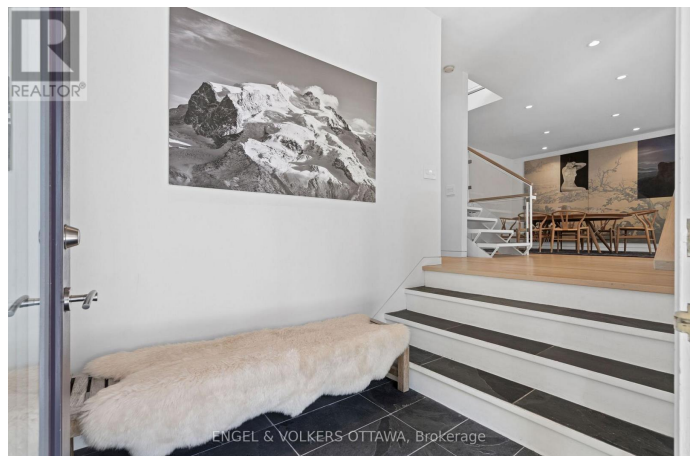
MLS® #X12448329

**\$2,975,000**

3 Bedroom, 4.00 Bathroom,  
Single Family on 0.00 Acres

4402 - Glebe, Ottawa, Ontario

The Modern House on Patterson Creek. This architecturally refined residence is one of only a handful of homes gracing the tranquil waters of Patterson Creek. Designed by John Donkin, the home is a study in modernist restraint. clean lines, light-filled interiors, and a seamless relationship between structure and setting. The current owners collaborated with Astro Design Centre and Bulthaup Toronto to reimagine the interiors, enhancing the original architecture with an uncompromising approach to craftsmanship and material quality. Every surface and junction was considered, walnut veneers, polished quartz, brushed stainless steel, and softly textured marble contribute to an atmosphere of quiet sophistication. The open-concept main level is anchored by a sculptural steel staircase that filters light through all three floors. Expansive glass walls frame park and water vistas, bringing nature into daily view. The living room centres on a minimalist JÃtul gas fireplace, while the Bulthaup kitchen sleek walnut cabinetry, chef-grade appliances, and a generous island defines contemporary elegance. The main floor office or guest suite provides a perfect private space to work from. .Upstairs, the principal suite provides a tranquil retreat with a bespoke walk-in closet and a spa-like ensuite appointed with marble and refined European fixtures. A secondary bedroom, guest bath, and flexible sitting area continue the home's cohesive aesthetic of calm and clarity. The lower level, with 9-foot ceilings, offers a



versatile family or media room, gym or guest space, and full bath. A private south-facing garden extends the living space outdoors, designed for intimate entertaining and quiet reflection. Patterson Creek offers a rare balance of serenity and urban convenience steps from the Rideau Canal, and Lansdowne Park. This exceptional property embodies architectural integrity, thoughtful design, and the timeless elegance of modern living. Exceptional Value and Lifestyle! (id:6289)

Essential Information

Listing #	X12448329
Price	\$2,975,000
Bedrooms	3
Bathrooms	4.00
Half Baths	1
Acres	0.00
Type	Single Family
Sub-Type	Freehold

Community Information

Address	5 Clemow Avenue
Subdivision	4402 - Glebe
City	Ottawa
Province	Ontario
Postal Code	K1S2A9

Amenities

Amenities	Public Transit, Park
Features	Cul-de-sac
Parking Spaces	2
Parking	Carport, No Garage
# of Garages	1
View	View of water, Unobstructed Water View
Is Waterfront	Yes
Waterfront	Waterfront

## Interior

Appliances	Oven - Built-In, Cooktop, Dishwasher, Dryer, Freezer, Oven, Washer, Wine Fridge, Refrigerator
Heating	Natural gas Forced air
Cooling	Central air conditioning
Fireplace	Yes
# of Fireplaces	1
# of Stories	2
Has Basement	Yes

## Exterior

Exterior	Cedar Siding, Steel
Exterior Features	Landscaped
Lot Description	44.9 x 111.7 FT
Foundation	Concrete

## Listing Details

Listing Office      ENGEL & VOLKERS OTTAWA



The trademarks MLS®, Multiple Listing Service® and the associated logos are owned by The Canadian Real Estate Association (CREA) and identify the quality of services provided by real estate professionals who are members of CREA. REALTOR®. Member of CREA and more.

Listing information last updated on October 14th, 2025 at 4:46am EDT