

\$15,081,740 - 15760 Robin's Hill Road, London East (east E)

MLS® #X4883242

\$15,081,740

0 Bedroom, 0.00 Bathroom, 52,006 sqft
Industrial on 4.40 Acres

East E, London East (east E), Ontario

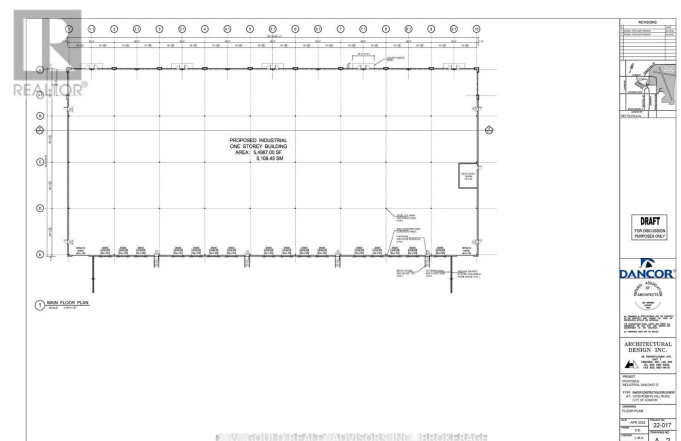
Brand New Industrial/Commercial Building To Be Built. Permits Will Be Ready Soon. Best Location In SW Ontario For Distribution Facilities And Foreign Trade Zone Applications. Quick Access To Hwy's 401 And 402, That Provide Quick Access To A Wide Range Of Supply Chains And US Border. Other Sizes And Configurations Possible. High Quality Construction/ Very Reputable Builder. High Power Possible. Also Available For Lease. Dc's Not Included. ****EXTRAS**** Electronic Brochure With Photos, Details And Zoning Available Upon Request. (id:6289)

Essential Information

Listing #	X4883242
Price	\$15,081,740
Bathrooms	0.00
Square Footage	52,006
Acres	4.40
Type	Industrial

Community Information

Address	15760 Robin's Hill Road
Subdivision	East E
City	London East (east E)
Province	Ontario
Postal Code	N5V0A4



Amenities

Amenities Highway, Public Transit

Interior

Heating Radiant heat

Cooling Partially air conditioned

Listing Details

Listing Office D. W. GOULD REALTY ADVISORS INC.



The trademarks MLS®, Multiple Listing Service® and the associated logos are owned by The Canadian Real Estate Association (CREA) and identify the quality of services provided by real estate professionals who are members of CREA. REALTOR®. Member of CREA and more.

Listing information last updated on October 12th, 2025 at 5:16am EDT